

[Project](#)[Facilities](#)[Floor Plans](#)[Location](#)[Payment](#)[Gallery](#)

City Prime

"A modern development rising right across from the Alanya Courthouse, in the heart of the city."

[Explore →](#)

[Project](#)[Facilities](#)[Floor Plans](#)[Location](#)[Payment](#)[Gallery](#)

City Prime

Discover Refined Living

Project Details

Our project, City Prime, is located right across from the Alanya Courthouse, in the city center. Built on a total area of 1,136 m², it consists of:

- 20 modern residential apartments
- With full access to social amenities and city life

Watch the Video

"Start your day with confidence, right across from Alanya Courthouse where business meets the heart of the city."



[Project](#)[Facilities](#)[Floor Plans](#)[Location](#)[Payment](#)[Gallery](#)

City Center • Alanya Courthouse

Prime Location Refined Living

City Prime is located in the very heart of Alanya, directly across from the Alanya Courthouse and just 400 meters from the city center.

With its modern residential design, high investment value, and central location, it is thoughtfully developed to serve both homeowners and investors seeking prestige and convenience. With its eye-catching exterior, smart apartment layouts, and immediate proximity to key institutions, City Prime offers a privileged lifestyle in one of Alanya's most sought-after urban settings.

[Explore →](#)



Project

Facilities

Floor Plans

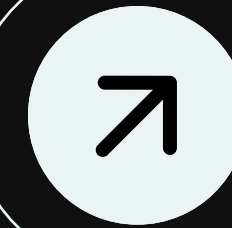
Location

Payment

Gallery



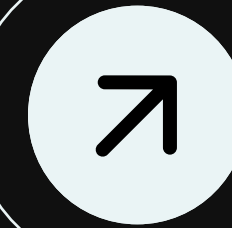
Swimming Pool



Lobby



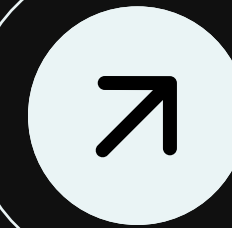
Game Room



Relaxation Room



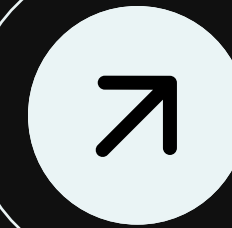
Fitness Center



Elevator



Sauna



Security System



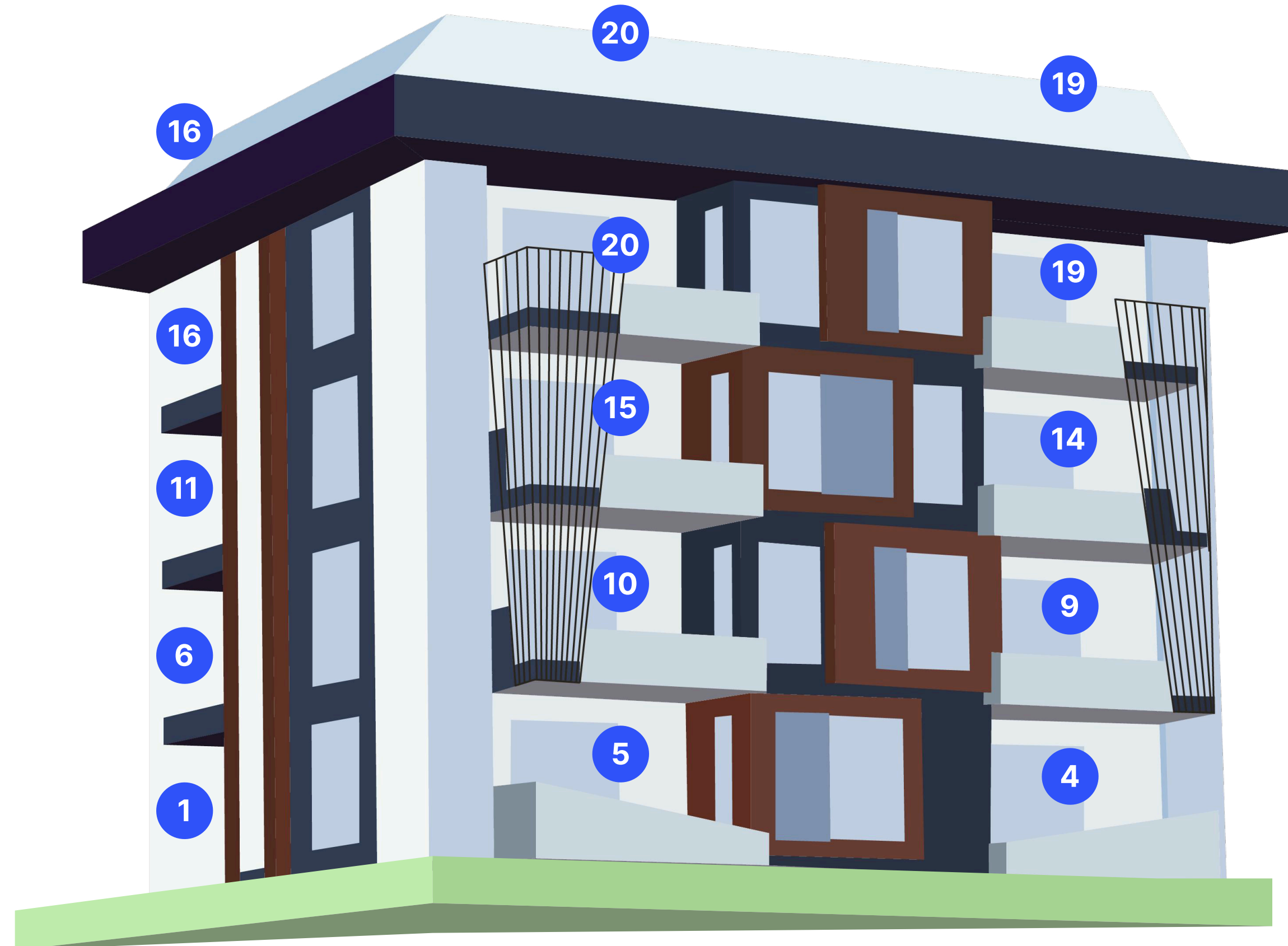
Outdoor Parking

[Project](#)[Facilities](#)[Floor Plans](#)[Location](#)[Payment](#)[Gallery](#)

City Prime includes a total of 44 residential units designed for modern urban living. Among these units:

- 8 are duplex apartments, offering spacious upper-level layouts
- 6 are garden apartments, providing private green spaces for a peaceful lifestyle

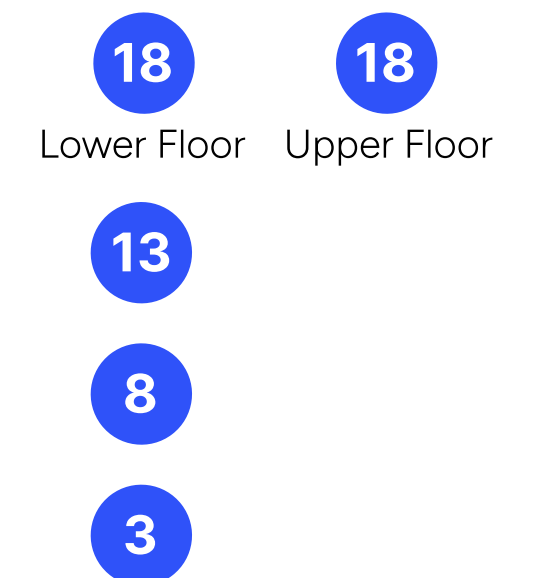
All residences feature quality materials and elegant design in central Alanya.



West-Facing Apartments

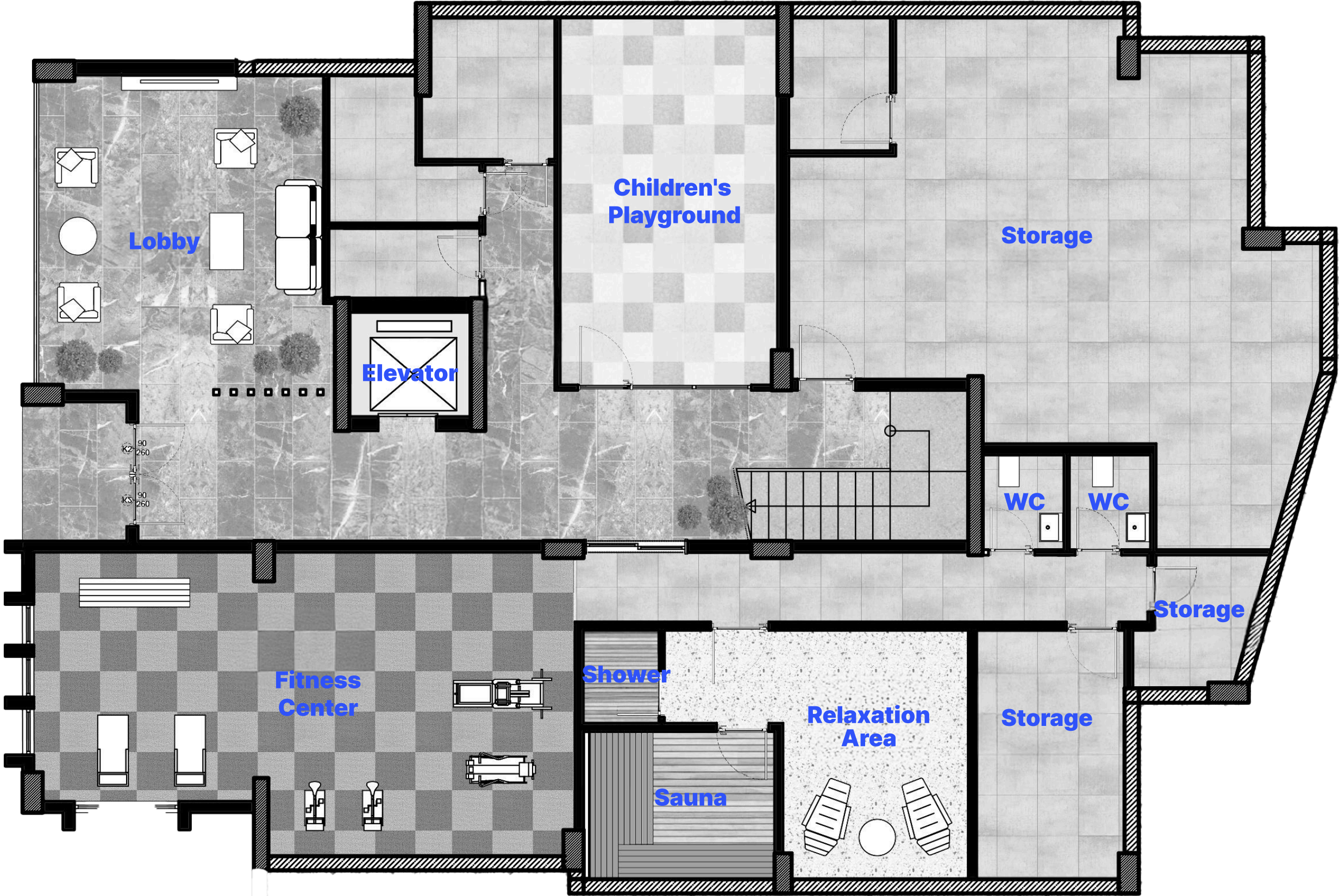


North-Facing Apartments



Social Area

Total Area: 180 m²



[Project](#)[Facilities](#)[Floor Plans](#)[Location](#)[Payment](#)[Gallery](#)

1

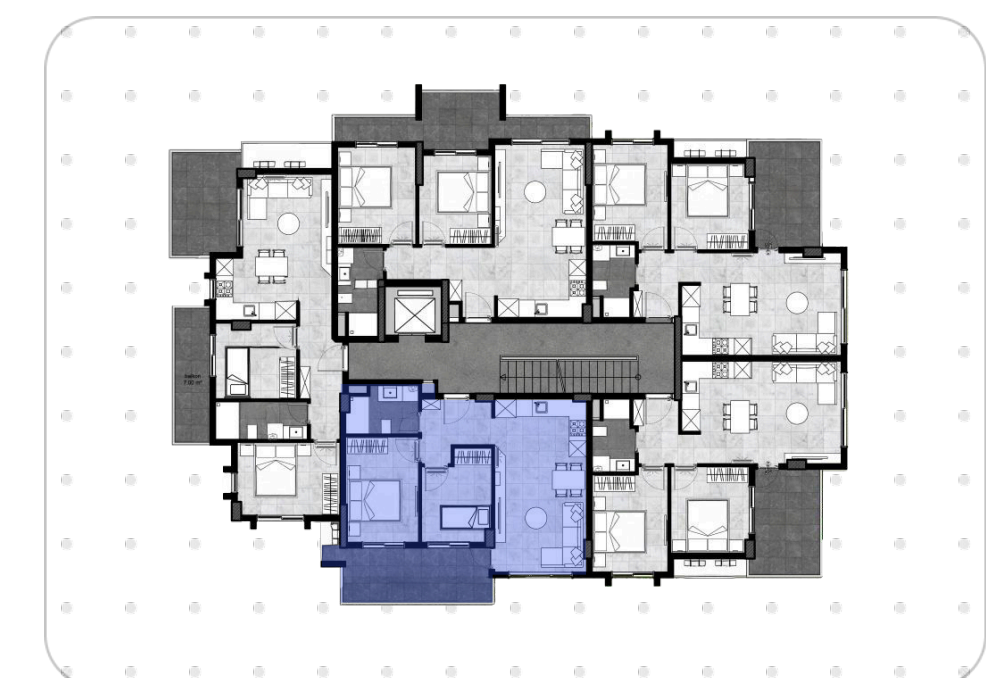
Apartment Details

Interior: 50.5 m²

Balcony: 12.5 m²

Garden: 64 m²

Total Area: 63 m² + 64 m²



[Project](#)[Facilities](#)[Floor Plans](#)[Location](#)[Payment](#)[Gallery](#)

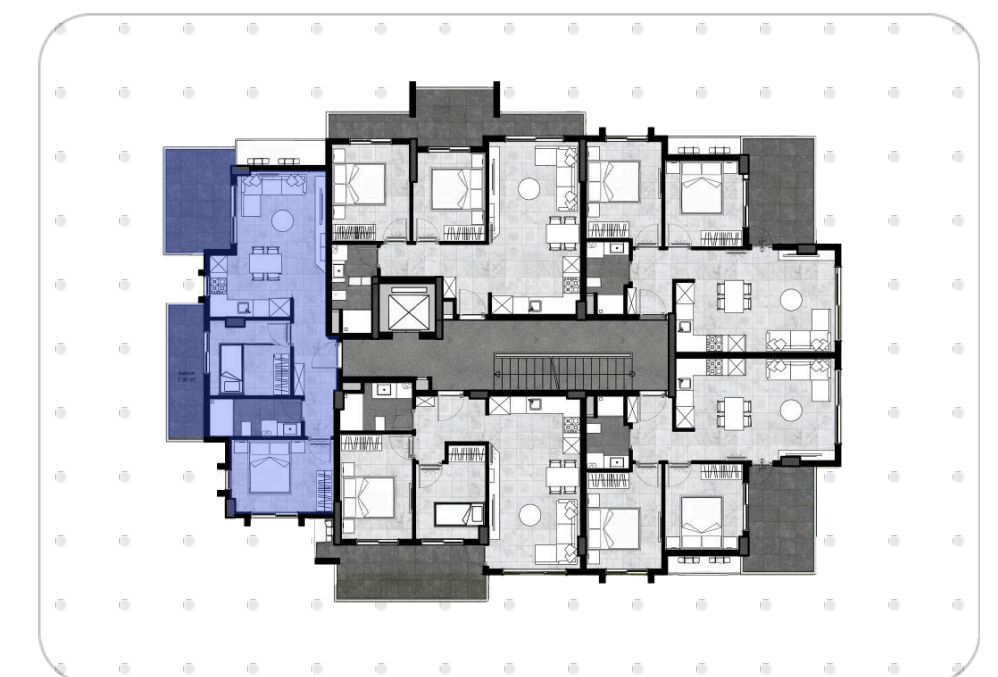
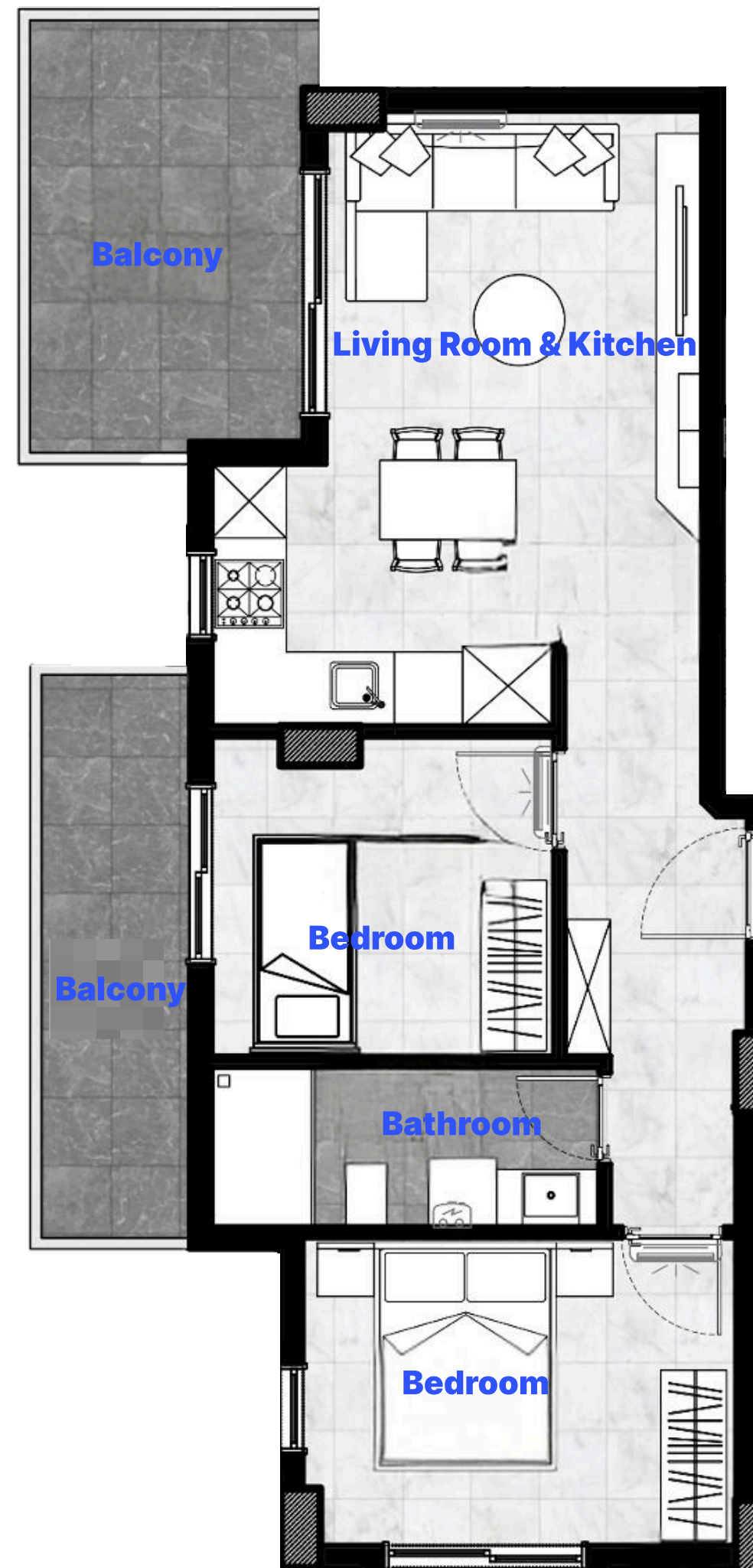
2

Apartment Details

Interior: 49.5 m²

Balcony: 17 m²

Total Area: 66.5 m²



[Project](#)[Facilities](#)[Floor Plans](#)[Location](#)[Payment](#)[Gallery](#)

3

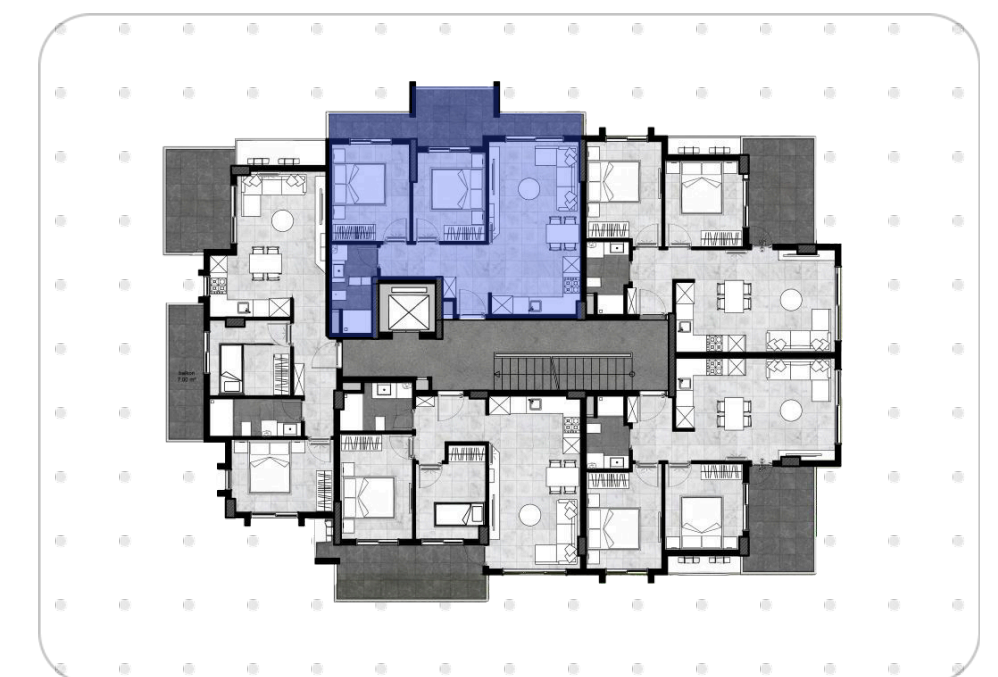
Apartment Details

Interior: 49.5 m²

Balcony: 13 m²

Garden: 34 m²

Total Area: 62.5 m² + 34 m²



[Project](#)[Facilities](#)[Floor Plans](#)[Location](#)[Payment](#)[Gallery](#)

4

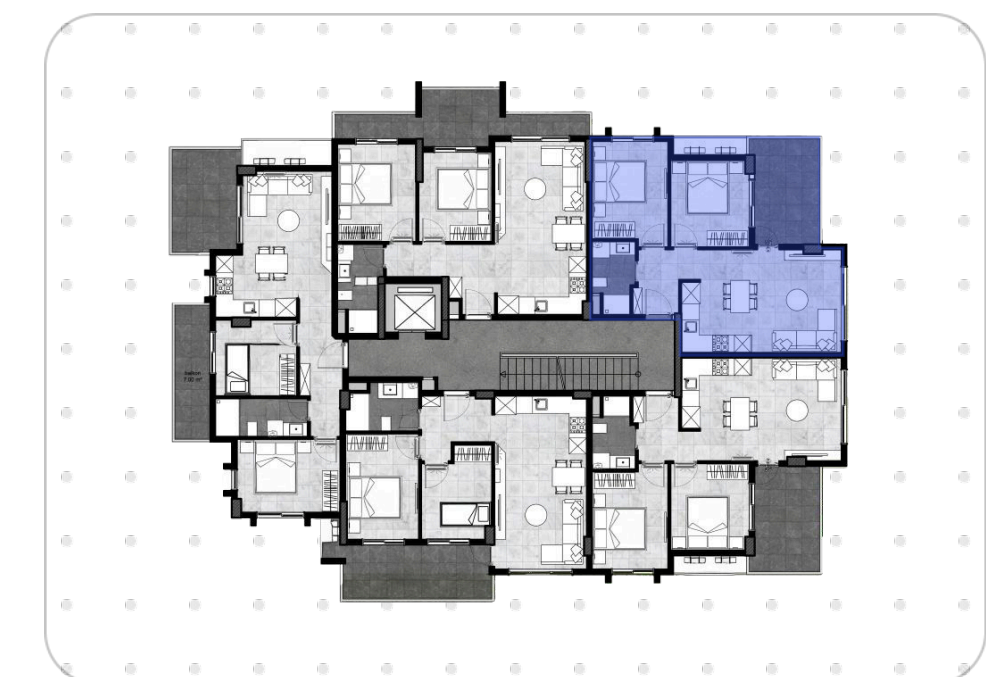
Apartment Details

Interior: 49.5 m²

Balcony: 10 m²

Garden: 131 m²

Total Area: 67 m² + 131 m²



[Project](#)[Facilities](#)[Floor Plans](#)[Location](#)[Payment](#)[Gallery](#)

5

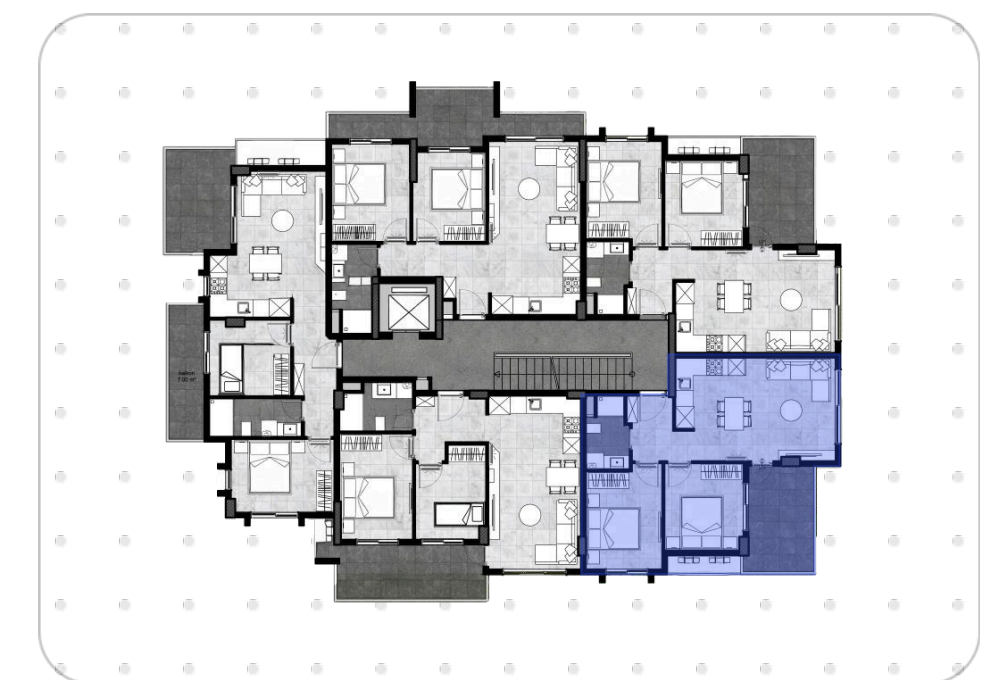
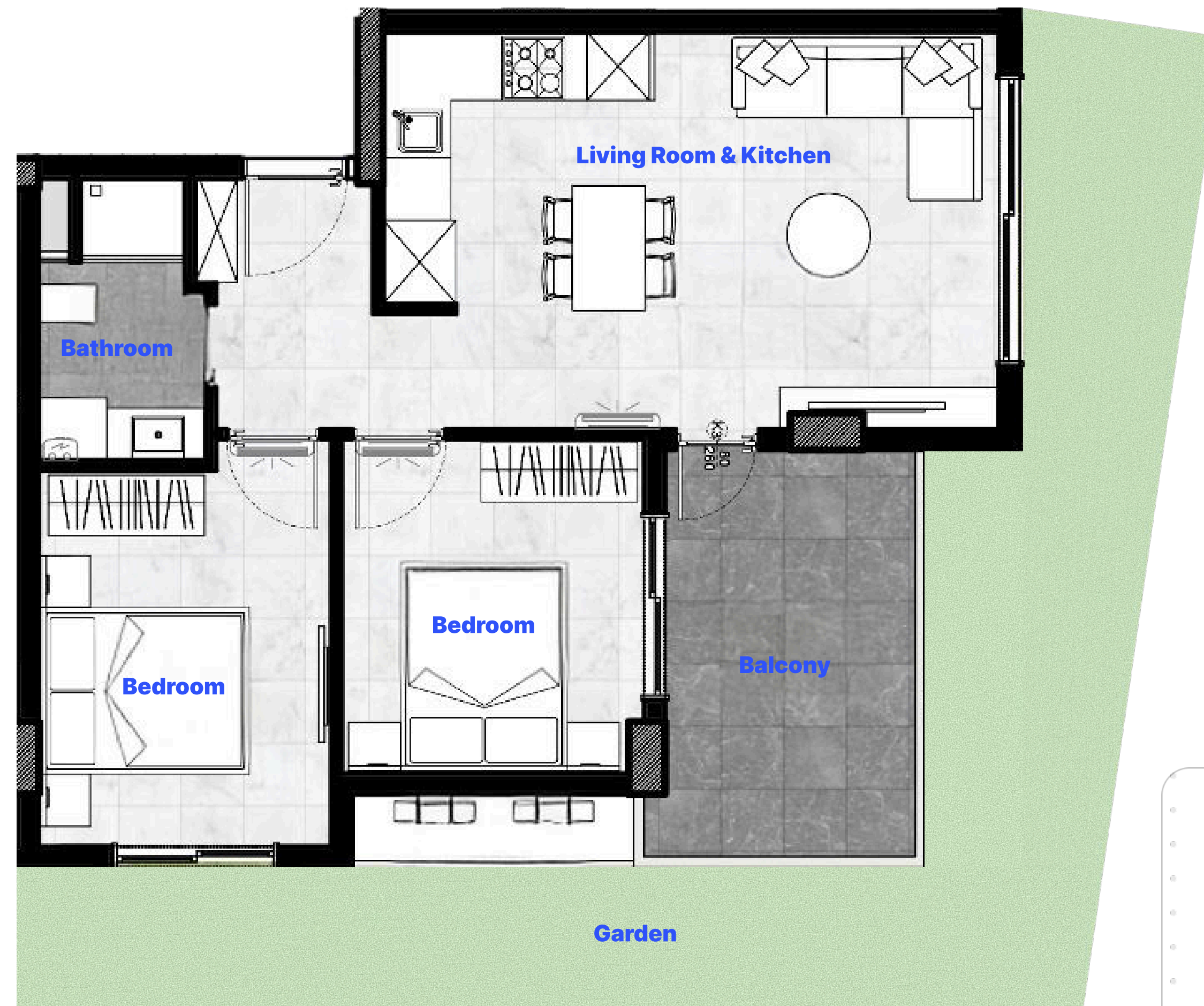
Apartment Details

Interior: 49.5 m²

Balcony: 10 m²

Garden: 120 m²

Total Area: 67 m² + 120 m²



[Project](#)[Facilities](#)[Floor Plans](#)[Location](#)[Payment](#)[Gallery](#)

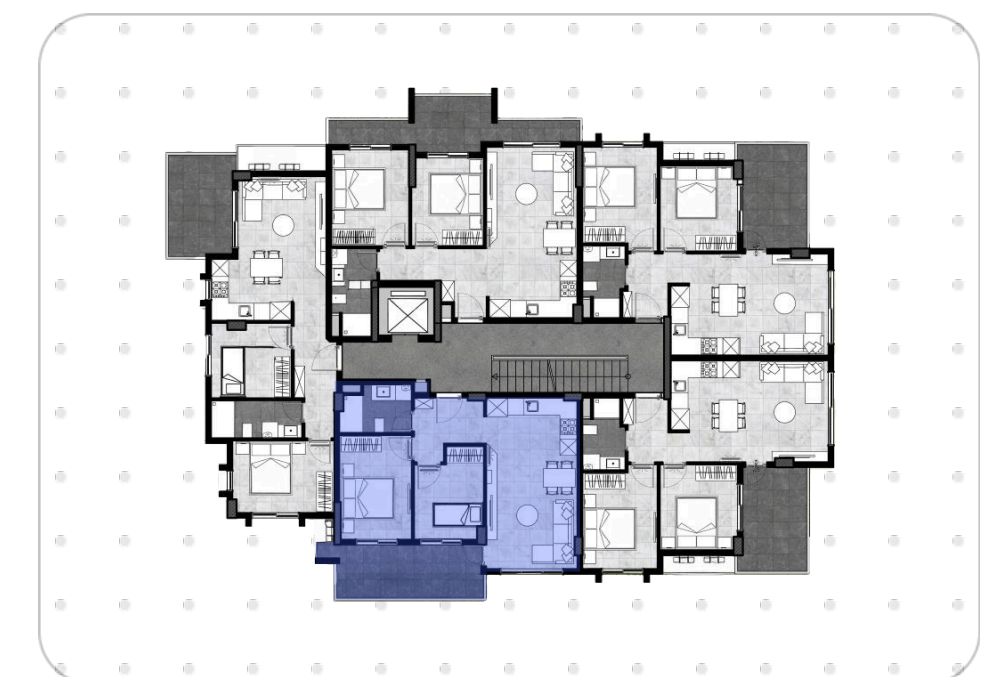
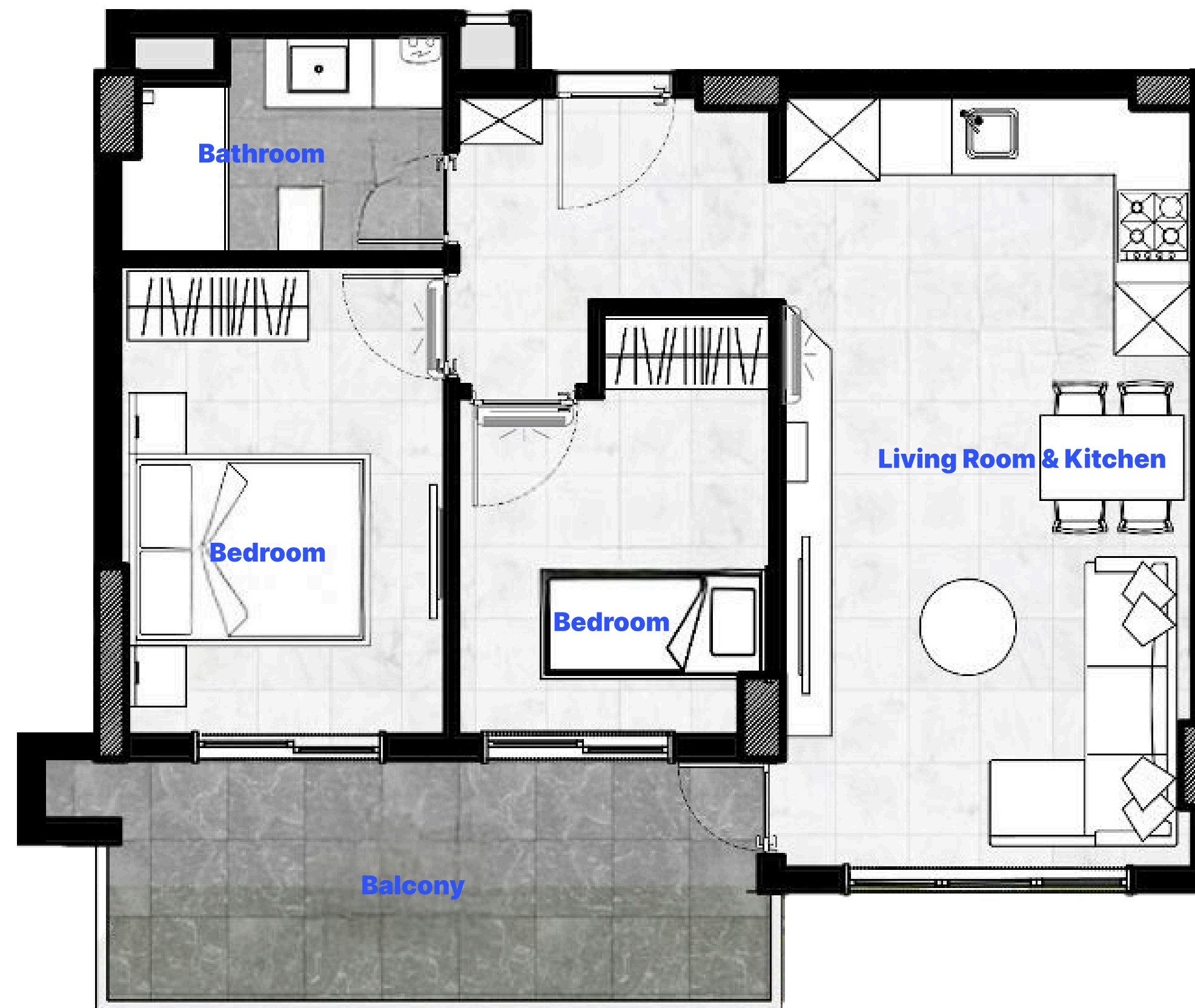
6

Apartment Details

Interior: 50.5 m²

Balcony: 12.5 m²

Total Area: 63 m²



[Project](#)[Facilities](#)[Floor Plans](#)[Location](#)[Payment](#)[Gallery](#)

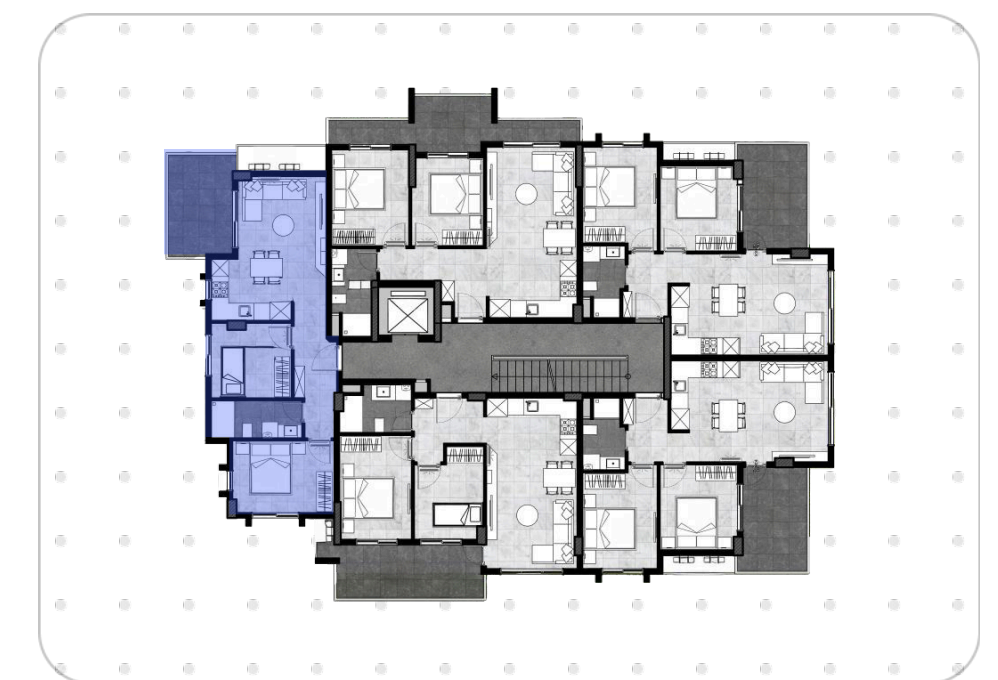
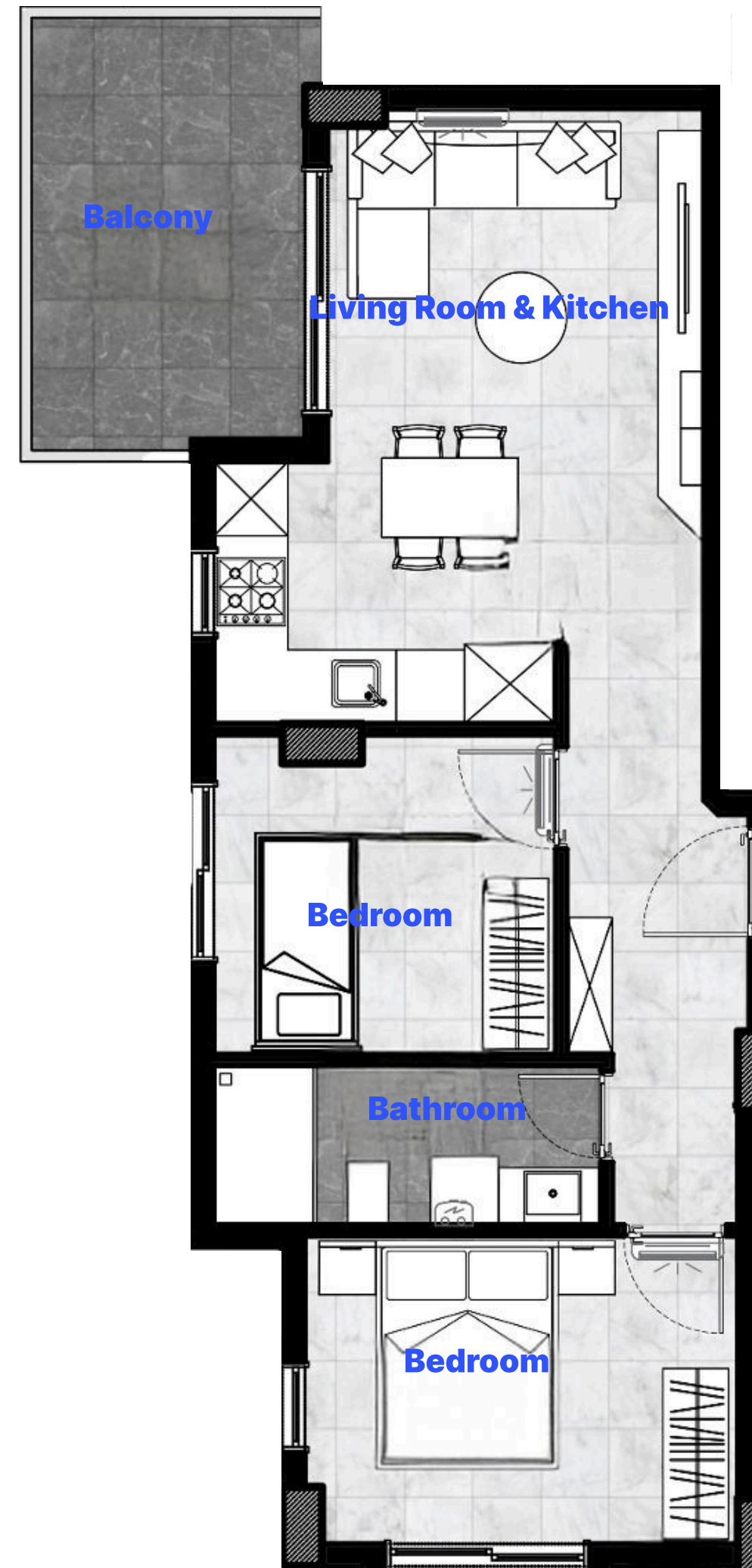
7

Apartment Details

Interior: 49.5 m²

Balcony: 10 m²

Total Area: 59.5 m²



[Project](#)[Facilities](#)[Floor Plans](#)[Location](#)[Payment](#)[Gallery](#)

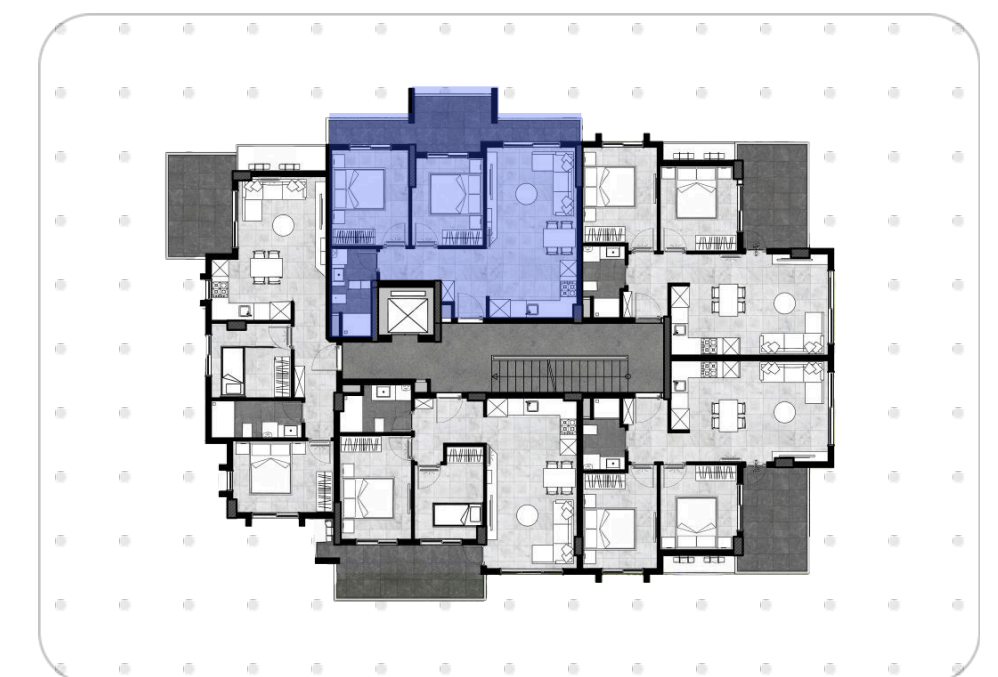
8

Apartment Details

Interior: 49.5 m²

Balcony: 13 m²

Total Area: 62.5 m²



[Project](#)[Facilities](#)[Floor Plans](#)[Location](#)[Payment](#)[Gallery](#)

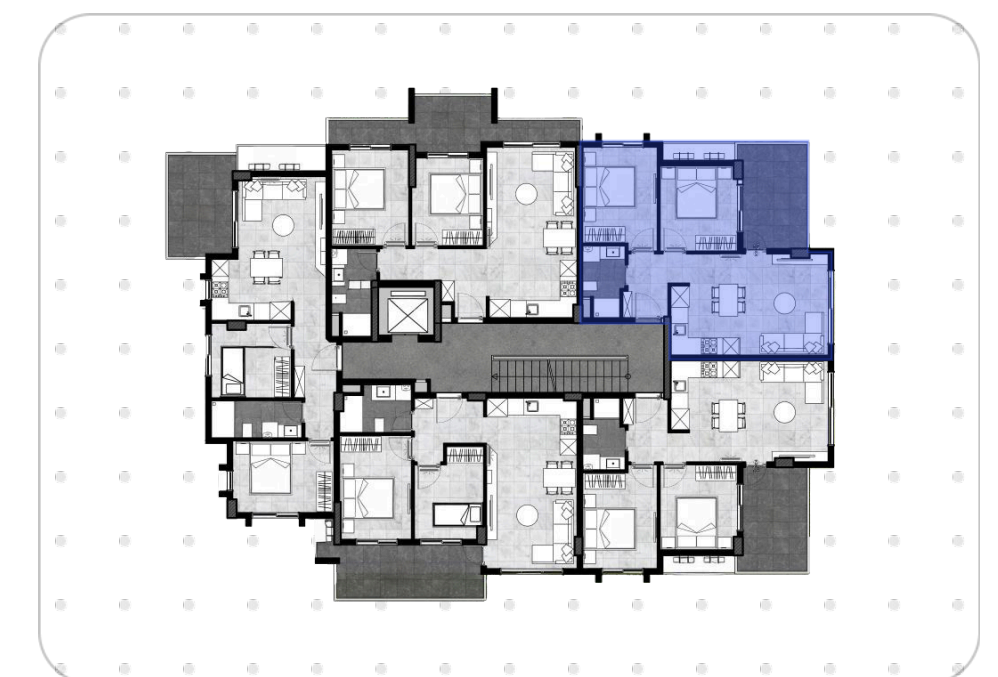
9

Apartment Details

Interior: 49.5 m²

Balcony: 10 m²

Total Area: 59.5 m²



[Project](#)[Facilities](#)[Floor Plans](#)[Location](#)[Payment](#)[Gallery](#)

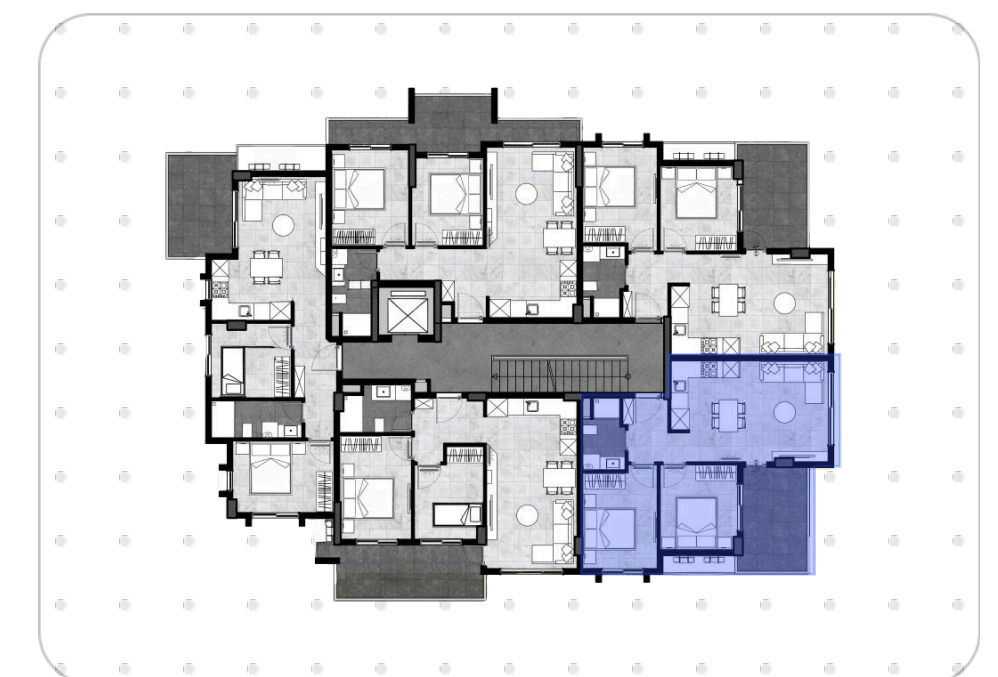
10

Apartment Details

Interior: 49.5 m²

Balcony: 10 m²

Total Area: 67 m²



[Project](#)[Facilities](#)[Floor Plans](#)[Location](#)[Payment](#)[Gallery](#)

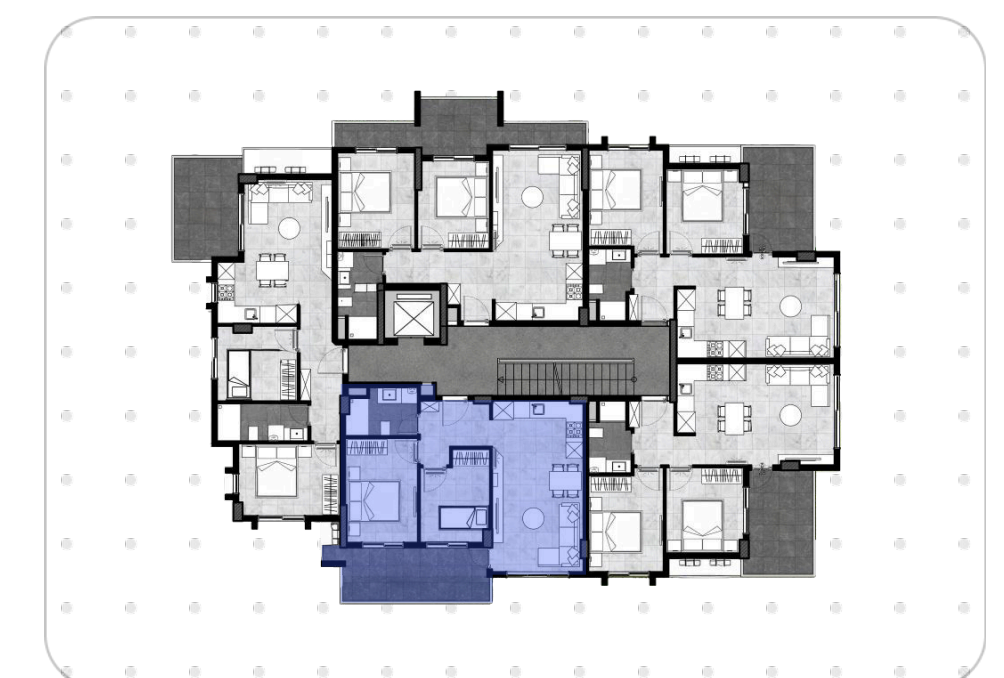
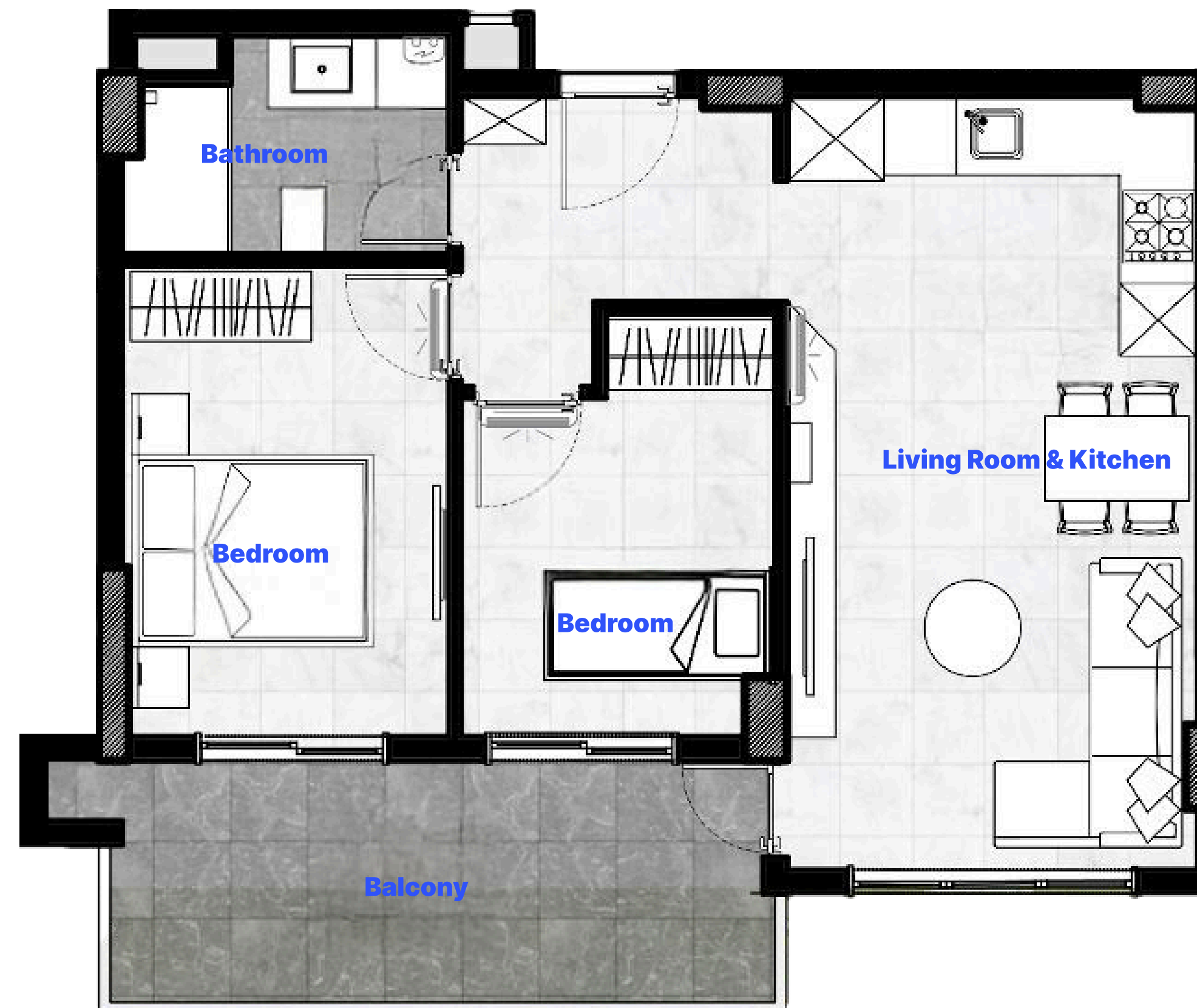
11

Apartment Details

Interior: 50.5 m²

Balcony: 12.5 m²

Total Area: 63 m²





Project

Facilities

Floor Plans

Location

Payment

Gallery

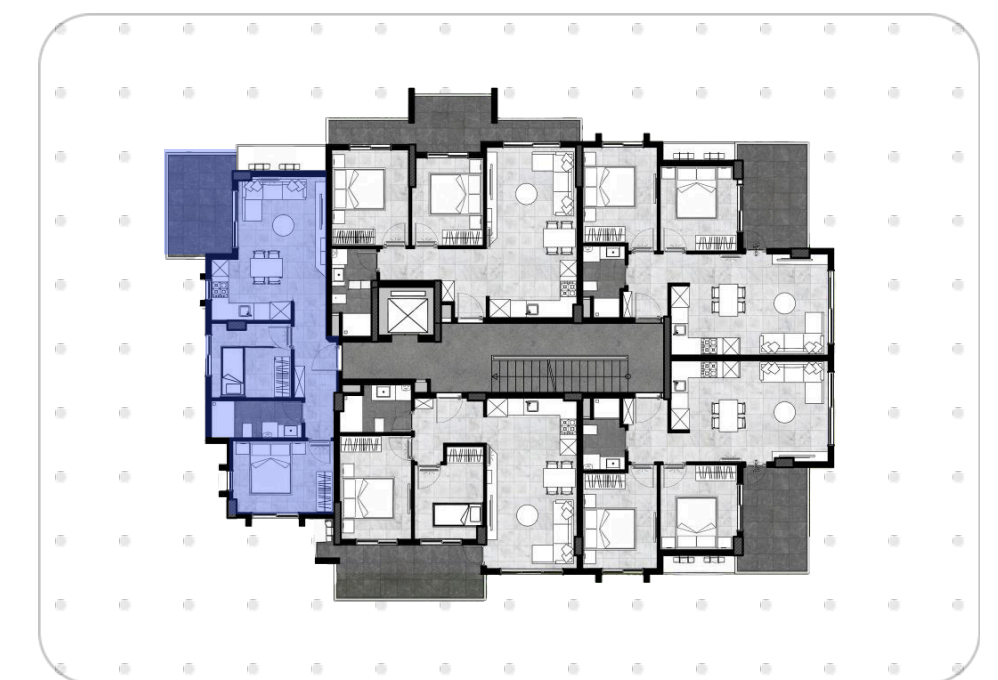
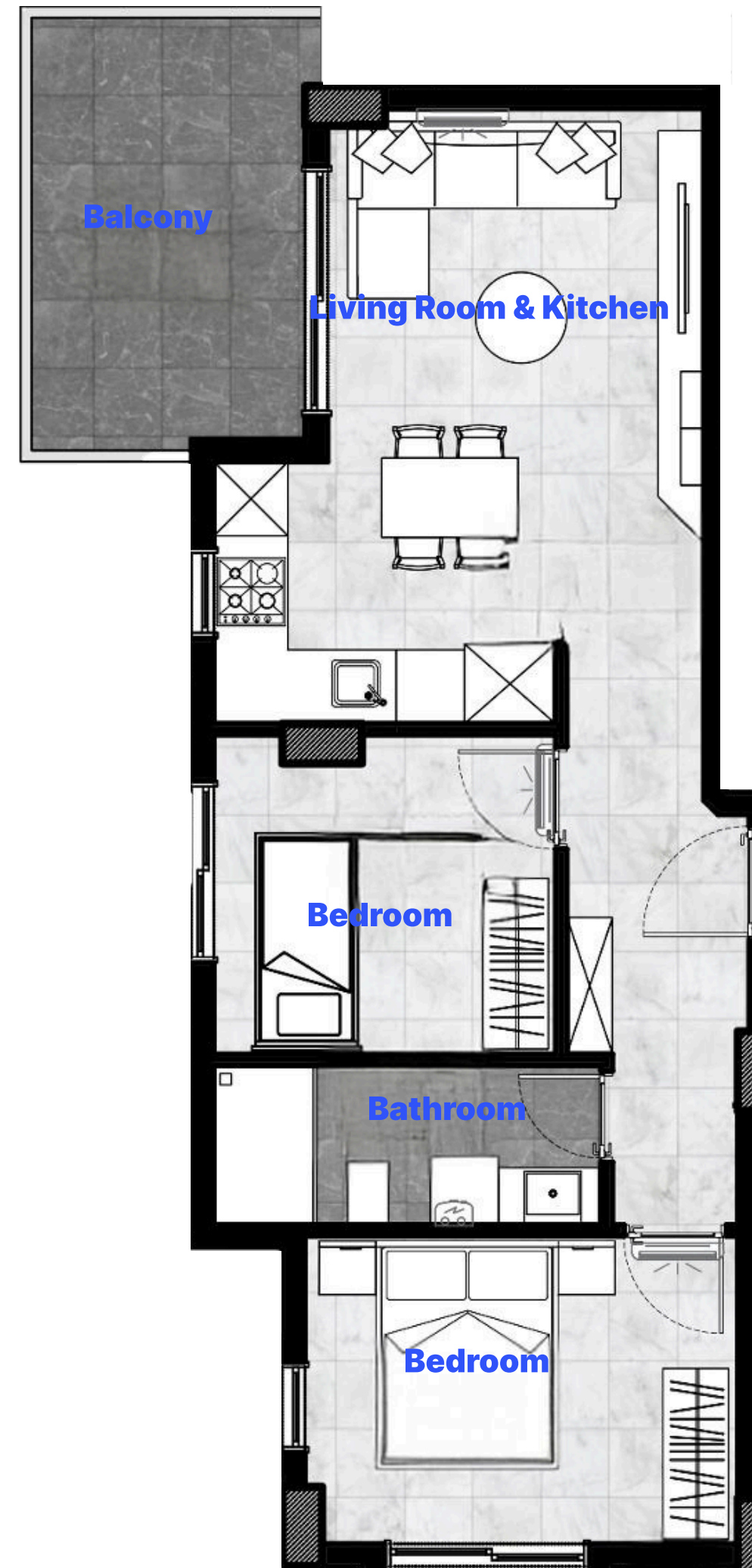
12

Apartment Details

Interior: 49.5 m²

Balcony: 10 m²

Total Area: 59.5 m²



[Project](#)[Facilities](#)[Floor Plans](#)[Location](#)[Payment](#)[Gallery](#)

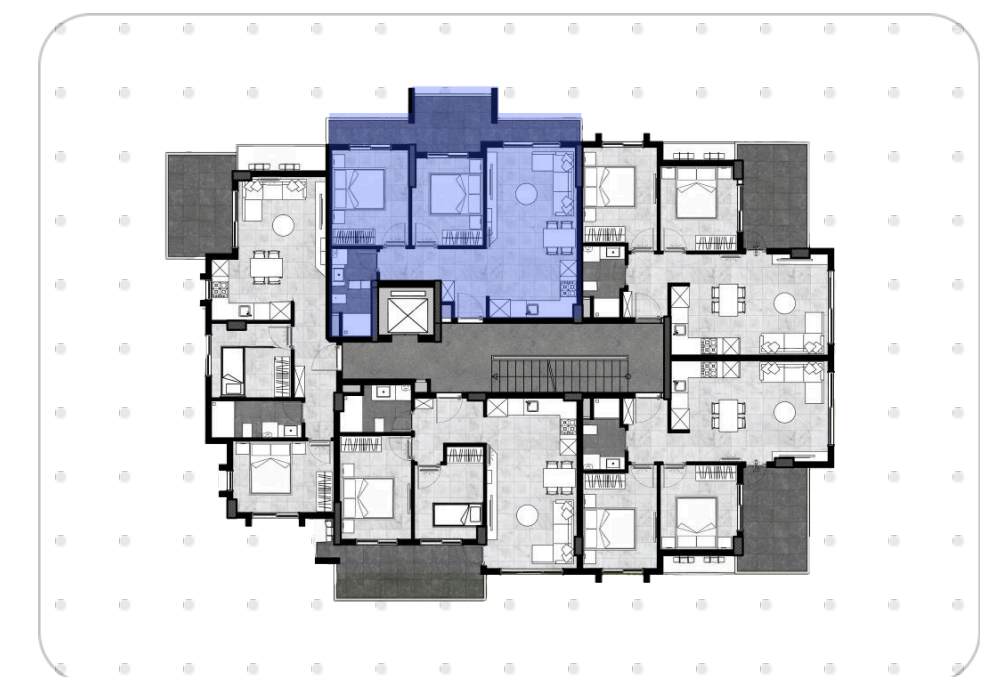
13

Apartment Details

Interior: 49.5 m²

Balcony: 13 m²

Total Area: 62.5 m²



[Project](#)[Facilities](#)[Floor Plans](#)[Location](#)[Payment](#)[Gallery](#)

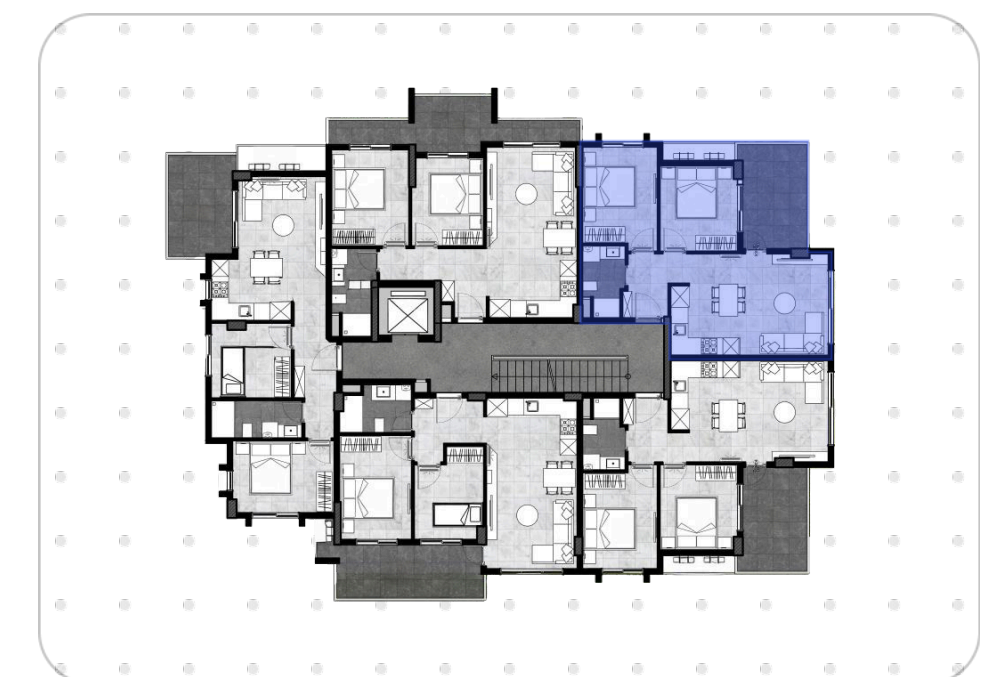
14

Apartment Details

Interior: 49.5 m²

Balcony: 10 m²

Total Area: 67 m²



[Project](#)[Facilities](#)[Floor Plans](#)[Location](#)[Payment](#)[Gallery](#)

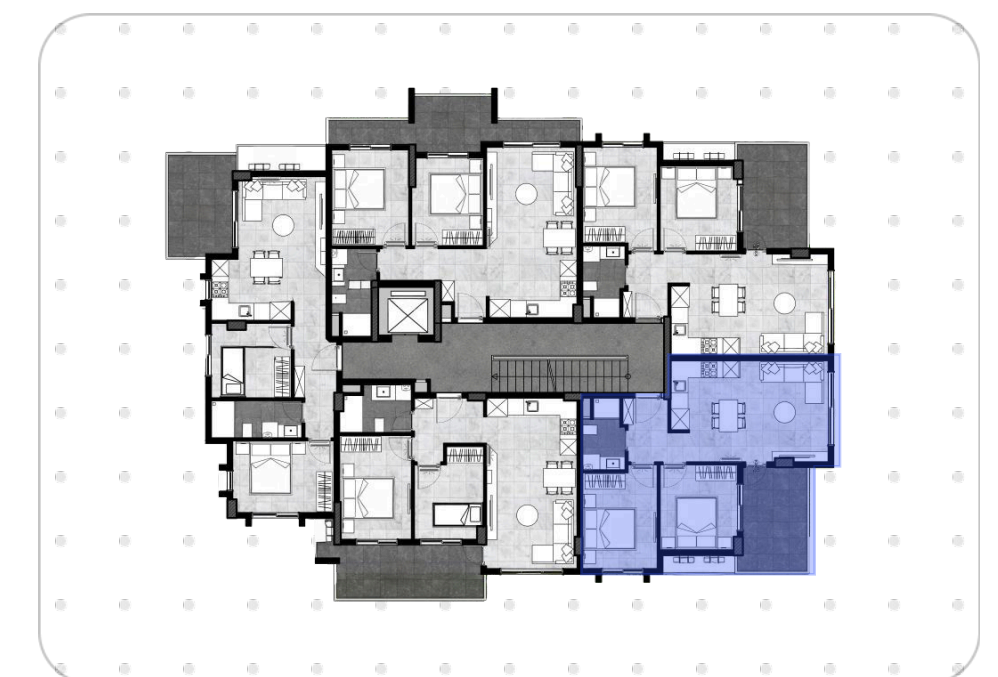
15

Apartment Details

Interior: 49.5 m²

Balcony: 10 m²

Total Area: 67 m²



[Project](#)[Facilities](#)[Floor Plans](#)[Location](#)[Payment](#)[Gallery](#)

16

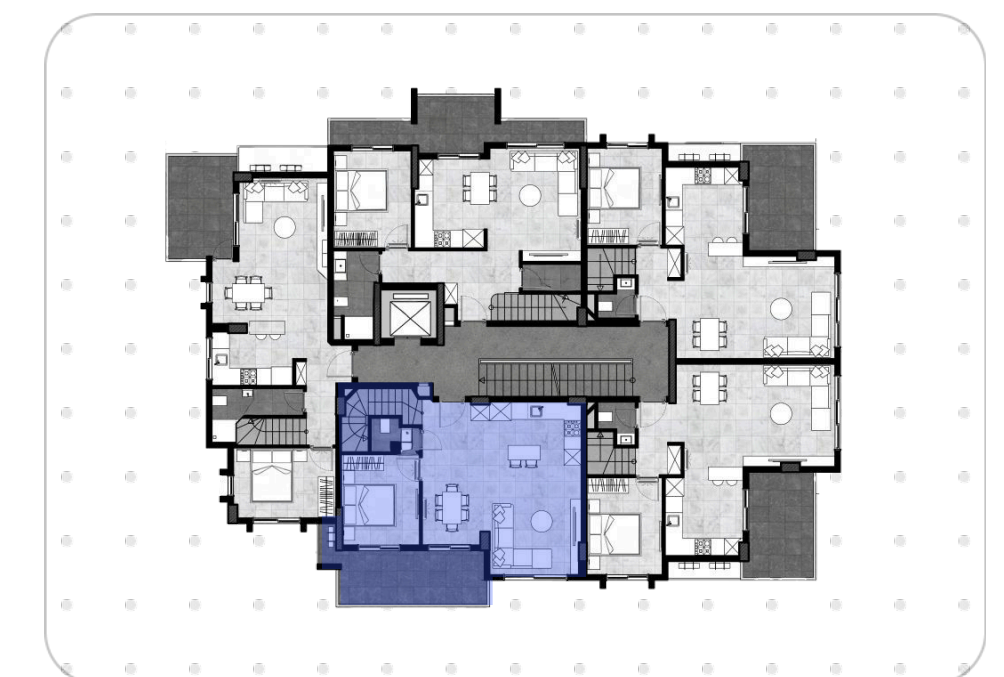
Duplex Apartment Details

Lower Floor: 51 m²

Balcony: 12.5 m²

Subtotal: 63.5 m²

Total Area: 63.5 m² + 52 m²



[Project](#)[Facilities](#)[Floor Plans](#)[Location](#)[Payment](#)[Gallery](#)

16

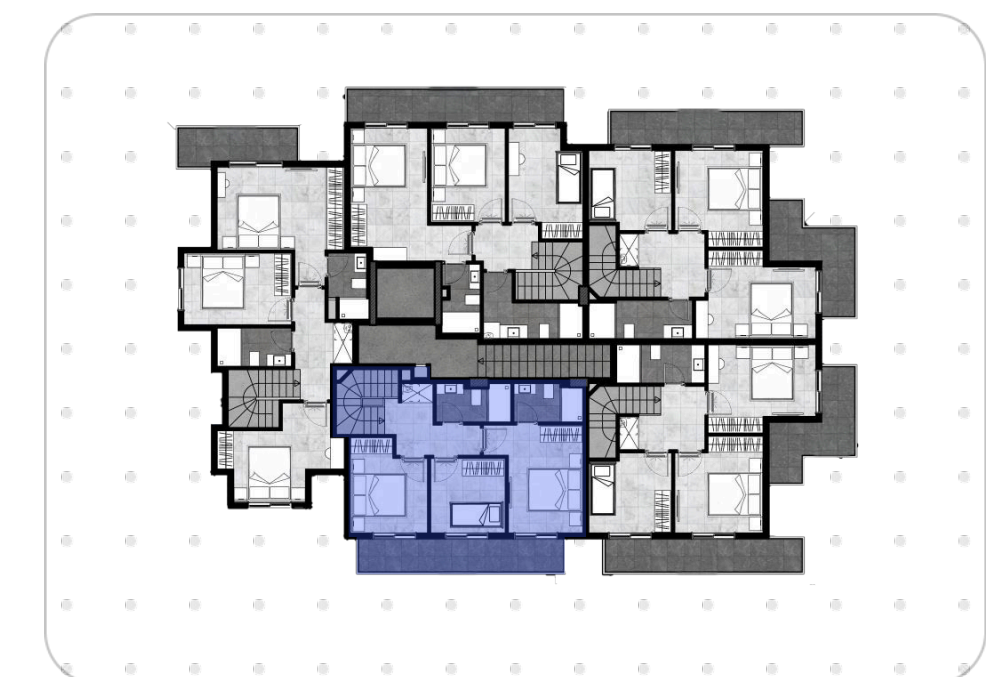
Duplex Apartment Details

Upper Floor: 42 m²

Terrace: 10 m²

Subtotal: 52 m²

Total Area: 63.5 m² + 52 m²



[Project](#)[Facilities](#)[Floor Plans](#)[Location](#)[Payment](#)[Gallery](#)

17

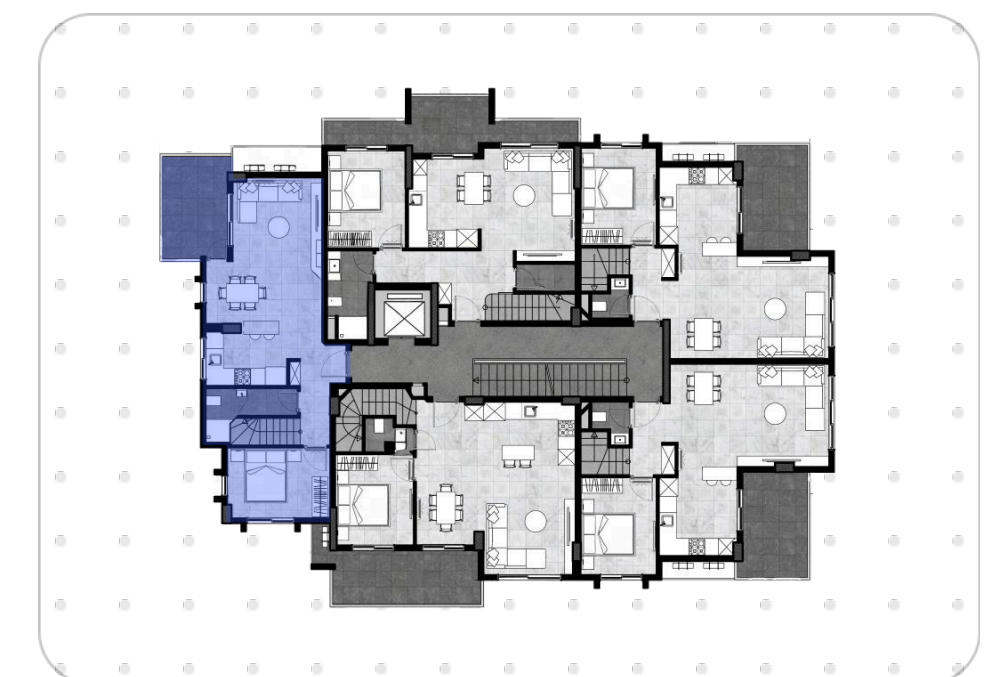
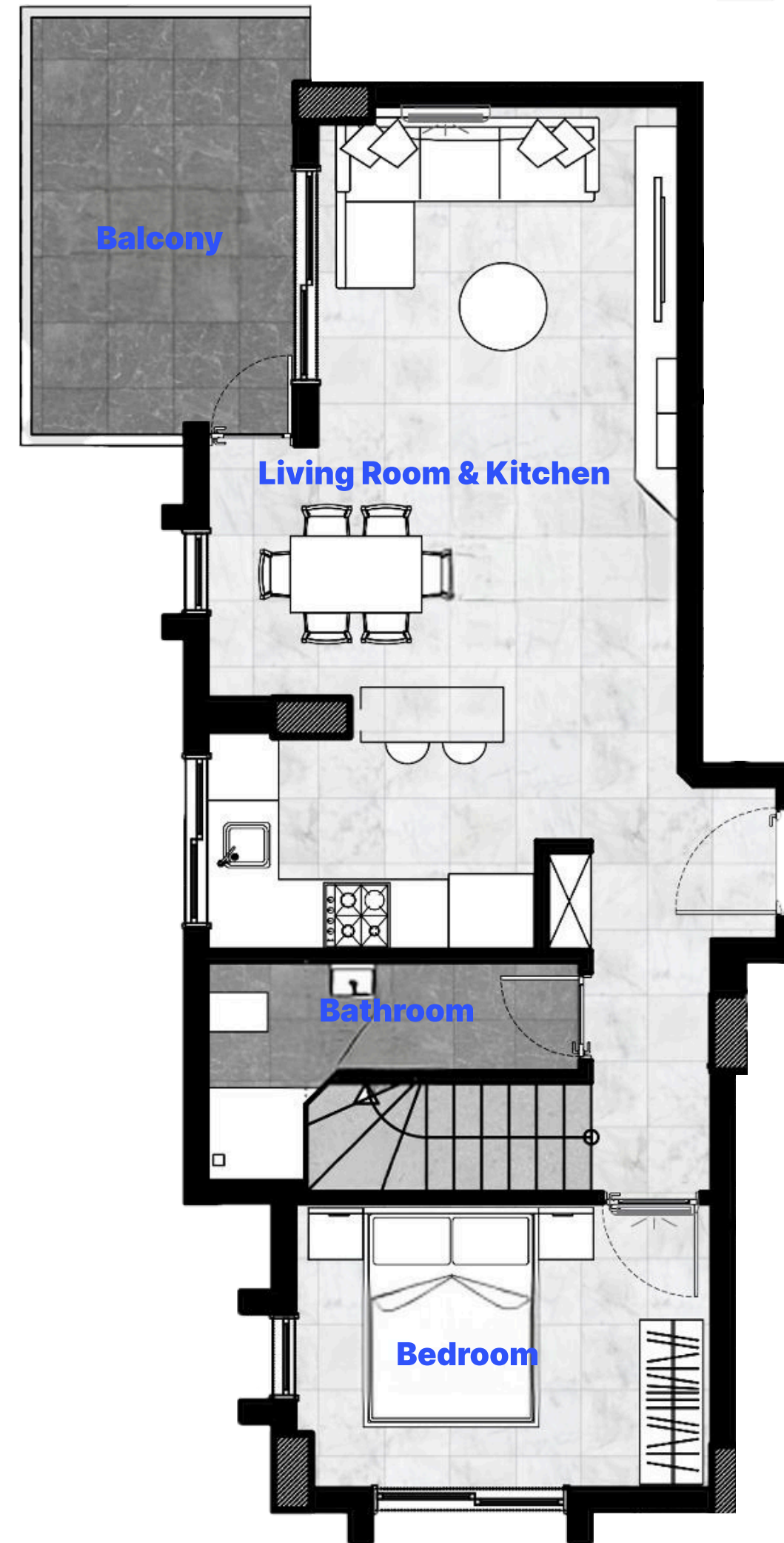
Duplex Apartment Details

Lower Floor: 50.5 m²

Balcony: 10 m²

Subtotal: 60.5 m²

Total Area: 60.5 m² + 56 m²



[Project](#)[Facilities](#)[Floor Plans](#)[Location](#)[Payment](#)[Gallery](#)

17

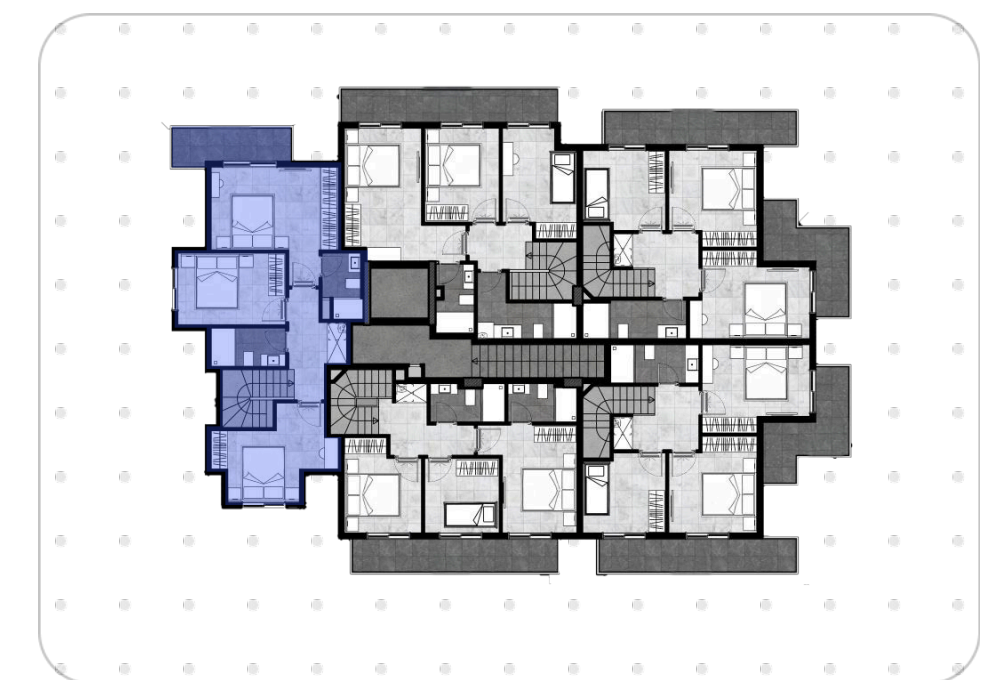
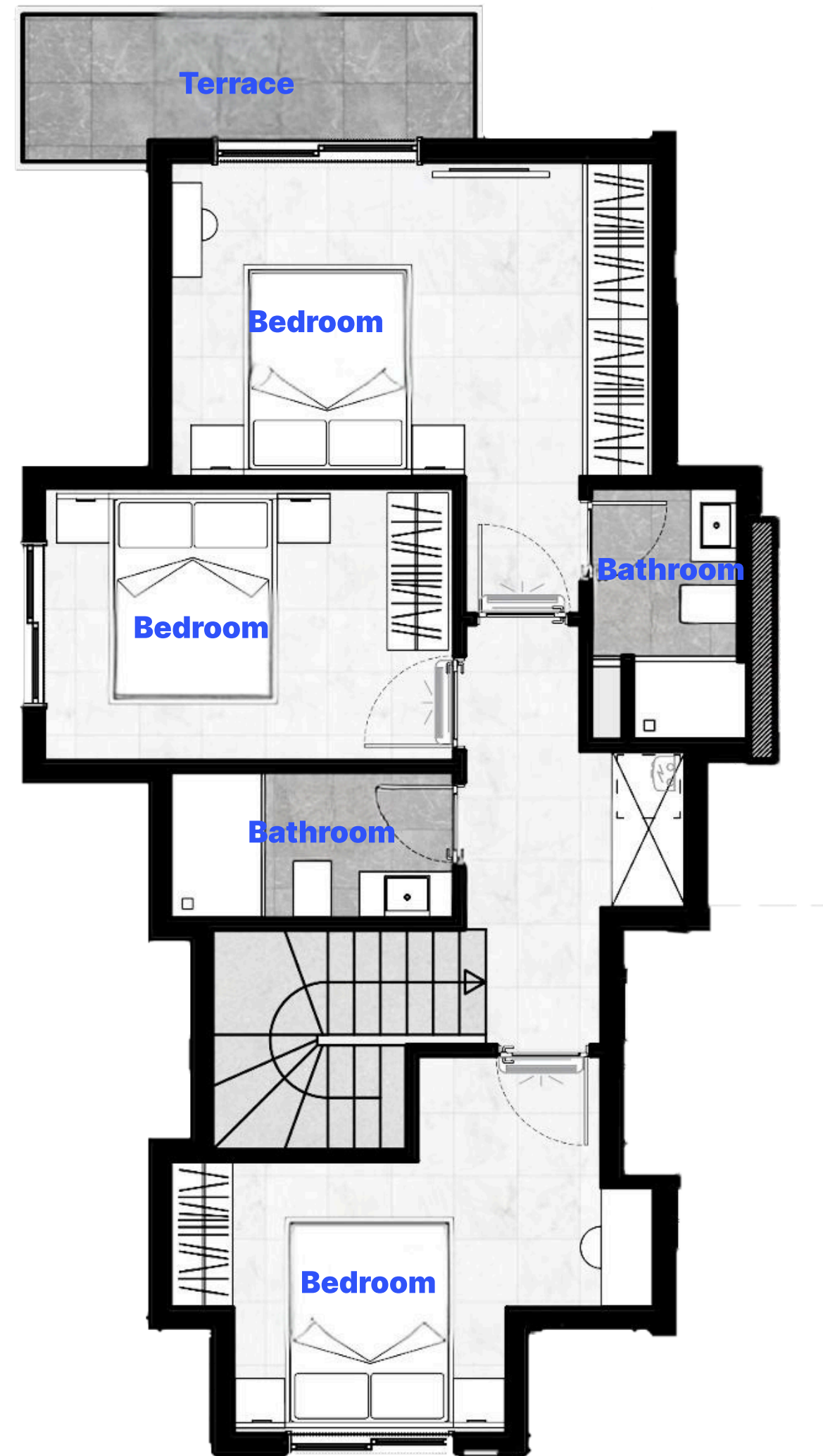
Duplex Apartment Details

Upper Floor: 50 m²

Terrace: 6 m²

Subtotal: 56 m²

Total Area: 60.5 m² + 56 m²



[Project](#)[Facilities](#)[Floor Plans](#)[Location](#)[Payment](#)[Gallery](#)

18

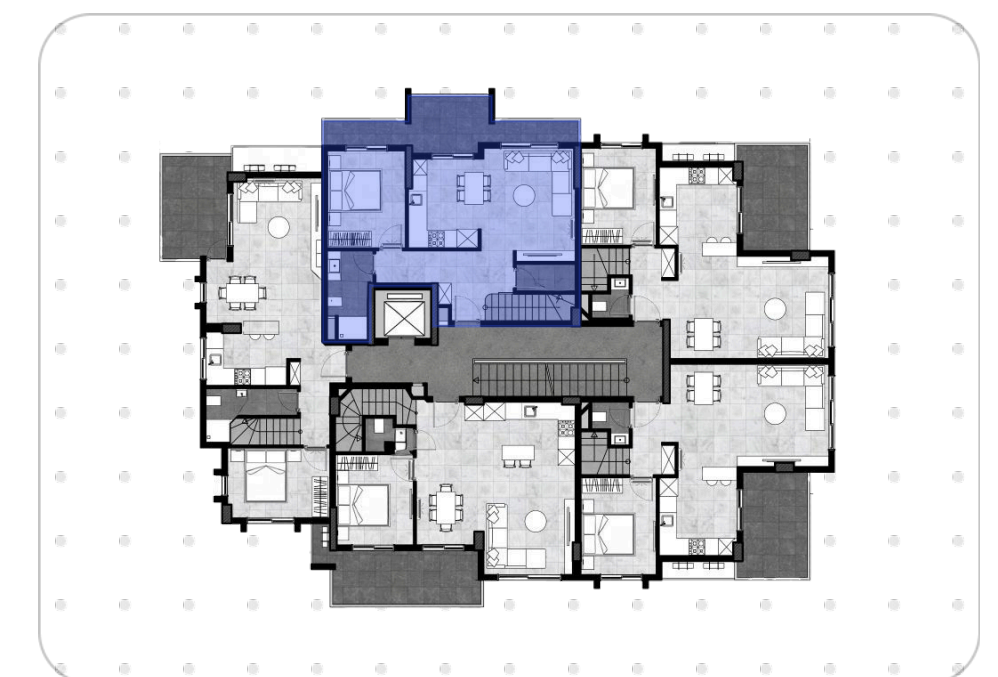
Duplex Apartment Details

Lower Floor: 52.5 m²

Balcony: 13 m²

Subtotal: 65.5 m²

Total Area: 65.5 m² + 58.5 m²



[Project](#)[Facilities](#)[Floor Plans](#)[Location](#)[Payment](#)[Gallery](#)

18

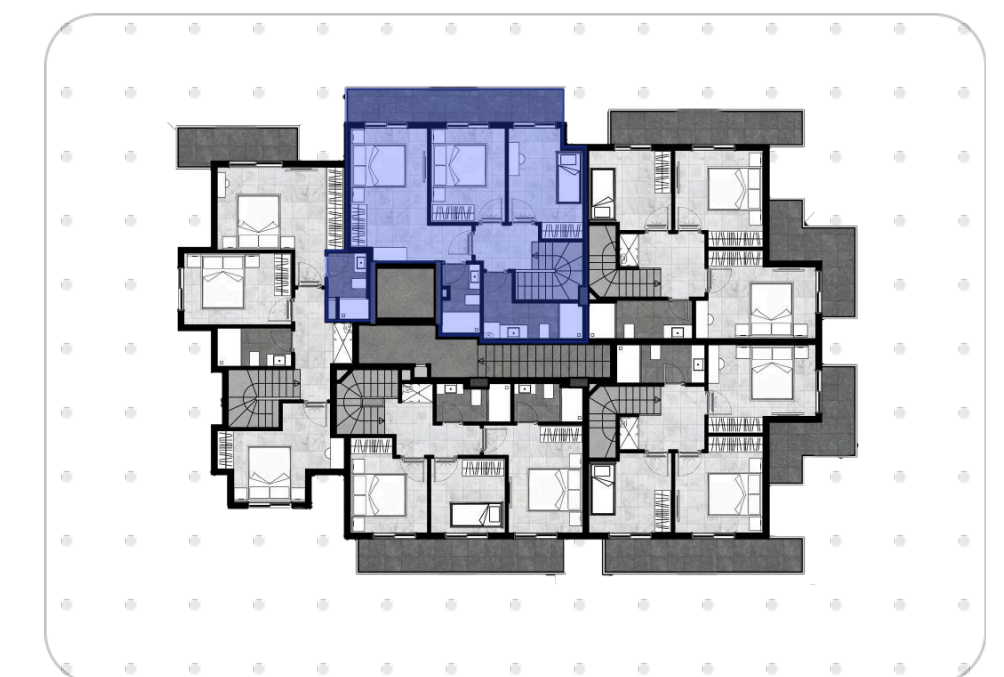
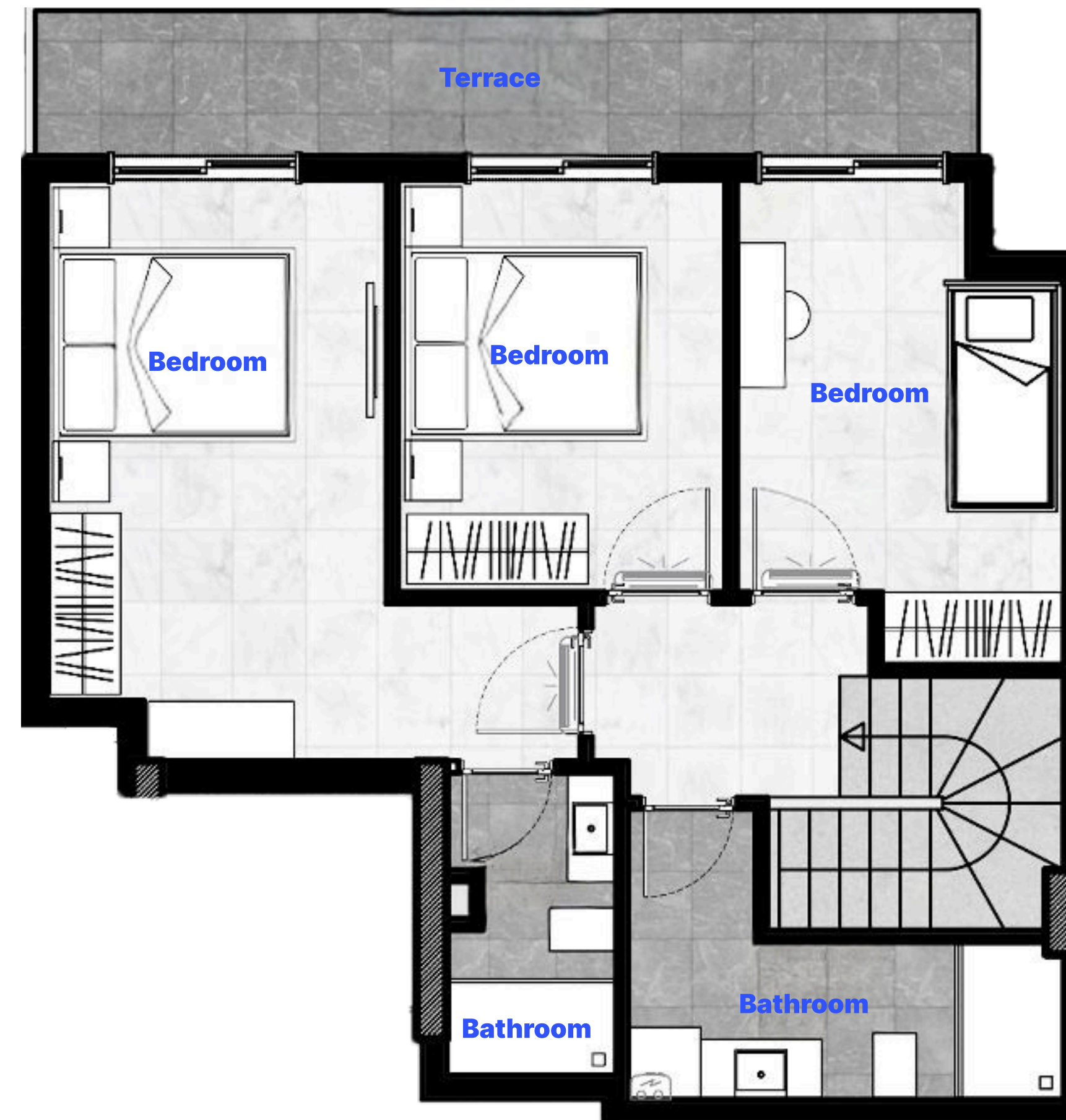
Duplex Apartment Details

Upper Floor: 48 m²

Terrace: 10.5 m²

Subtotal: 58.5 m²

Total Area: 65.5 m² + 58.5 m²



[Project](#)[Facilities](#)[Floor Plans](#)[Location](#)[Payment](#)[Gallery](#)

19

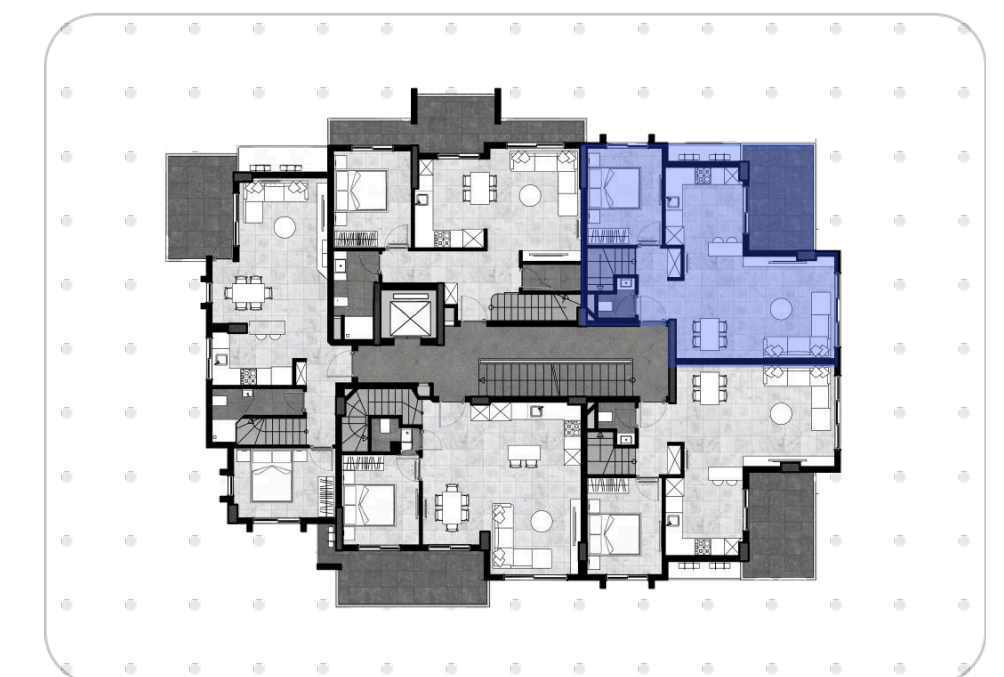
Duplex Apartment Details

Lower Floor: 49.5 m²

Balcony: 10 m²

Subtotal: 59.5 m²

Total Area: 59.5 m² + 62.5 m²



[Project](#)[Facilities](#)[Floor Plans](#)[Location](#)[Payment](#)[Gallery](#)

19

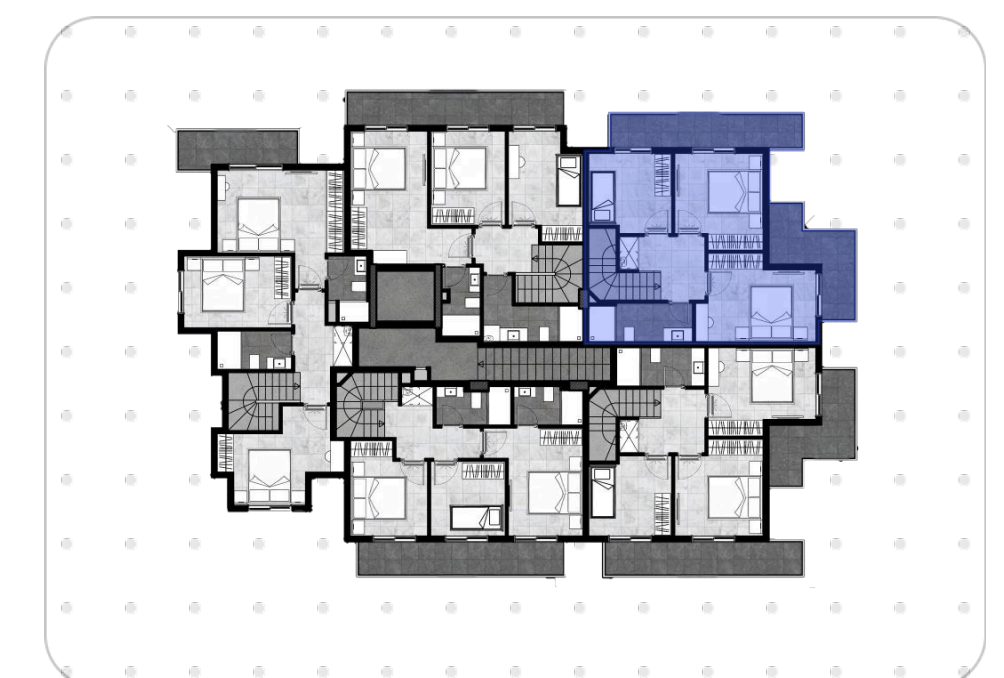
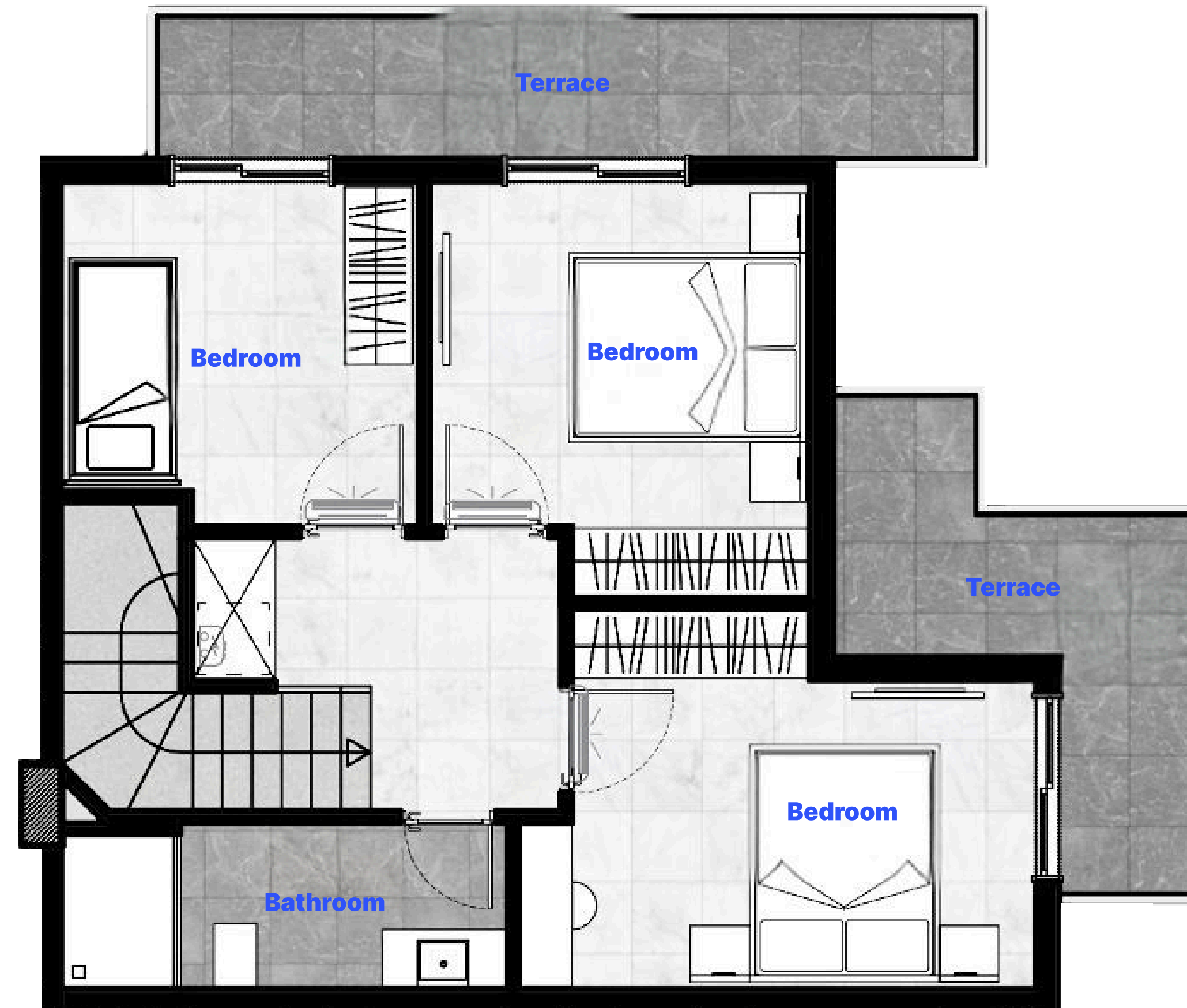
Duplex Apartment Details

Upper Floor: 45 m²

Terrace: 17.5 m²

Subtotal: 62.5 m²

Total Area: 59.5 m² + 62.5 m²



[Project](#)[Facilities](#)[Floor Plans](#)[Location](#)[Payment](#)[Gallery](#)

20

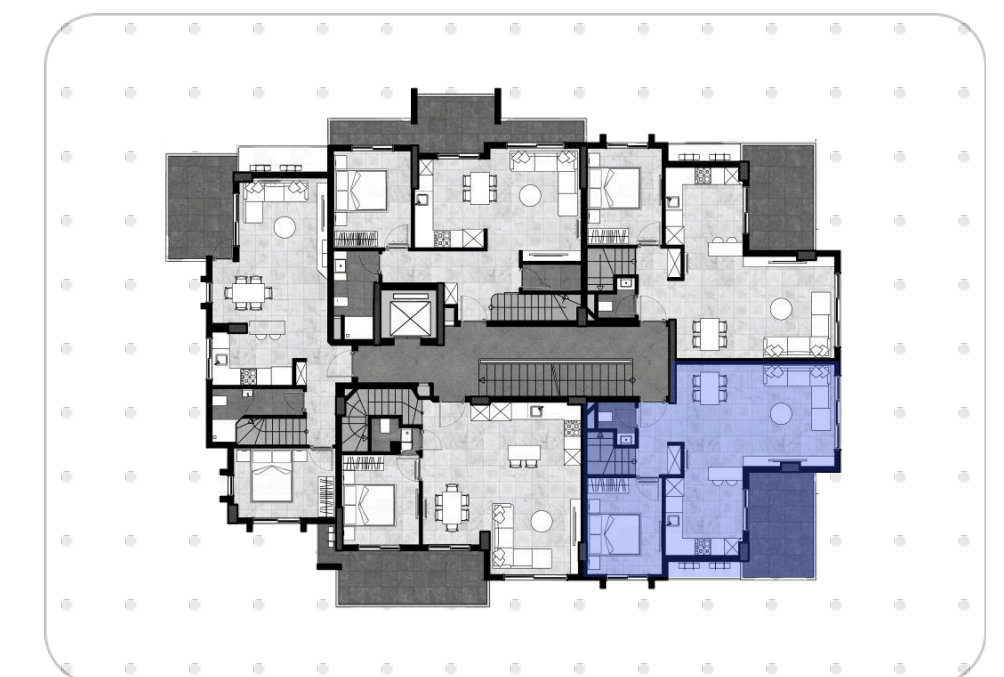
Duplex Apartment Details

Lower Floor: 51 m²

Balcony: 12.5 m²

Subtotal: 62.5 m²

Total Area: 62.5 m² + 57.5 m²



[Project](#)[Facilities](#)[Floor Plans](#)[Location](#)[Payment](#)[Gallery](#)

20

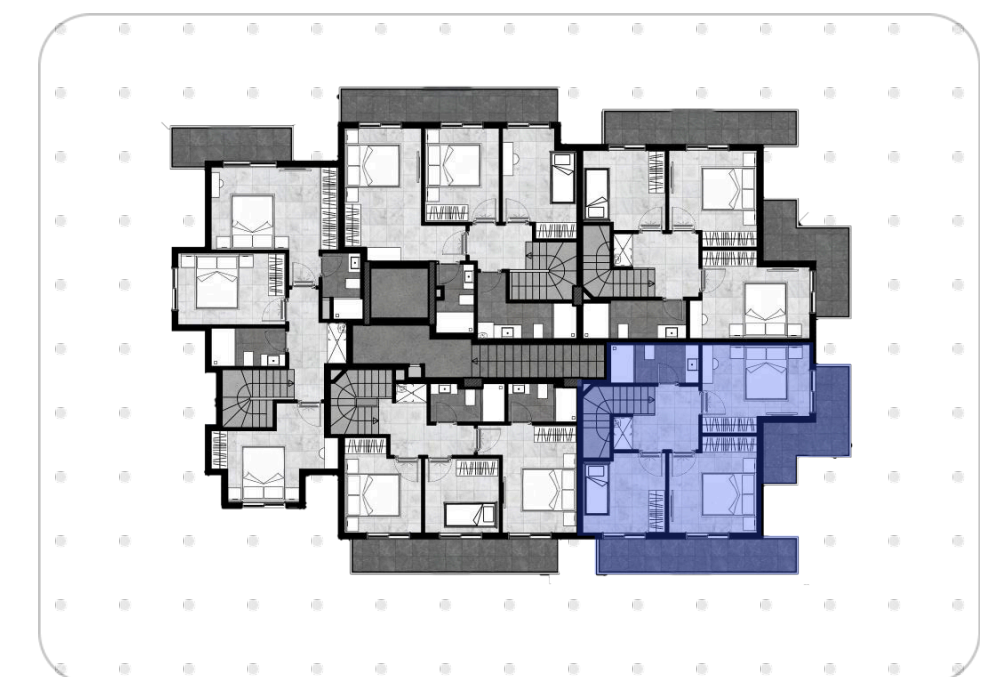
Duplex Apartment Details

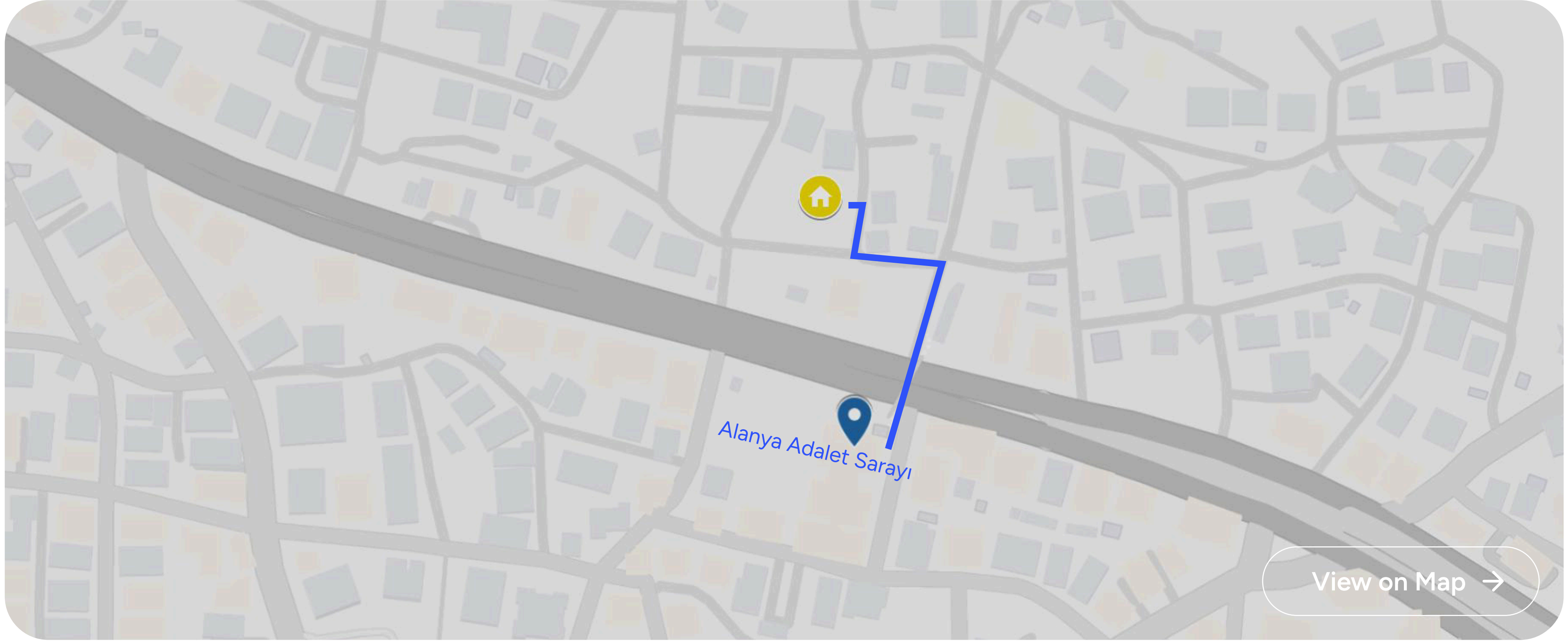
Upper Floor: 40 m²

Terrace: 17.5 m²

Subtotal: 57.5 m²

Total Area: 62.5 m² + 57.5 m²



[Project](#)[Facilities](#)[Floor Plans](#)[Location](#)[Payment](#)[Gallery](#)[View on Map →](#)

Right across
Alanya Courthouse

400 m
Alanya City Center

1.2 km
Beach



Project

Facilities

Floor Plans

Location

Payment

Gallery

City Prime

welcomes you with investor-friendly
and flexible financing terms.



Project

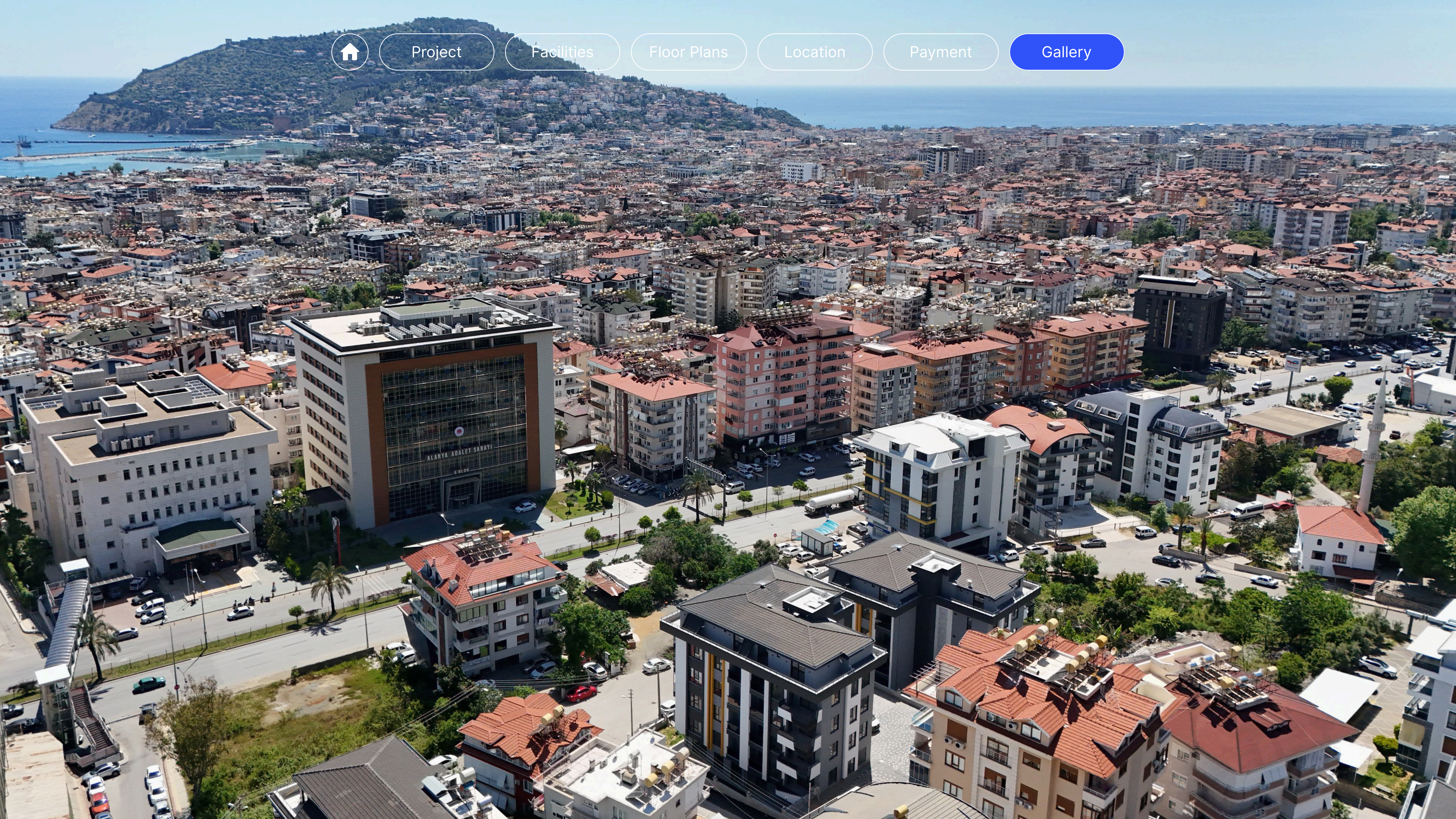
Facilities

Floor Plans

Location

Payment

Gallery





Project

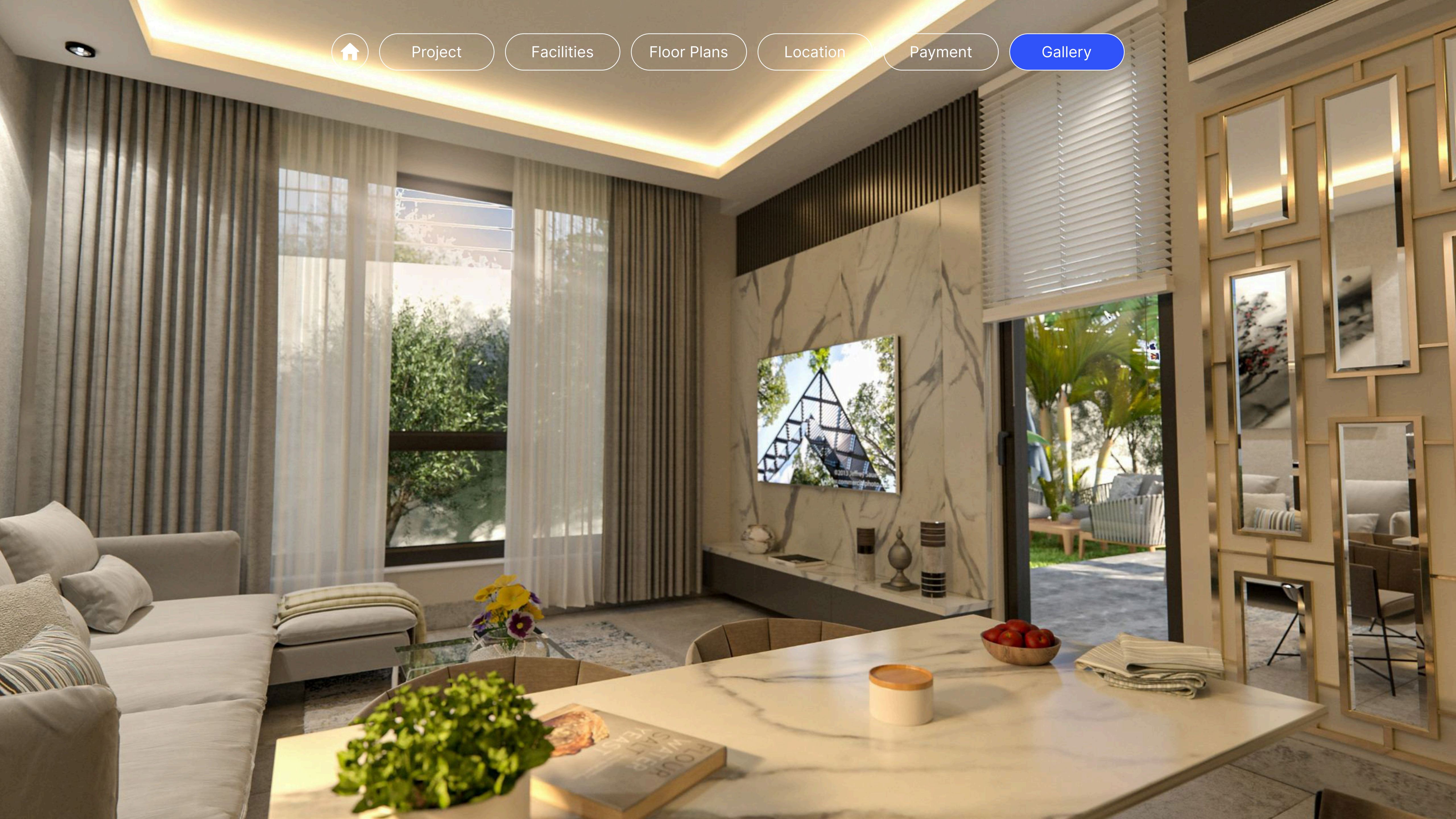
Facilities

Floor Plans

Location

Payment

Gallery





Project

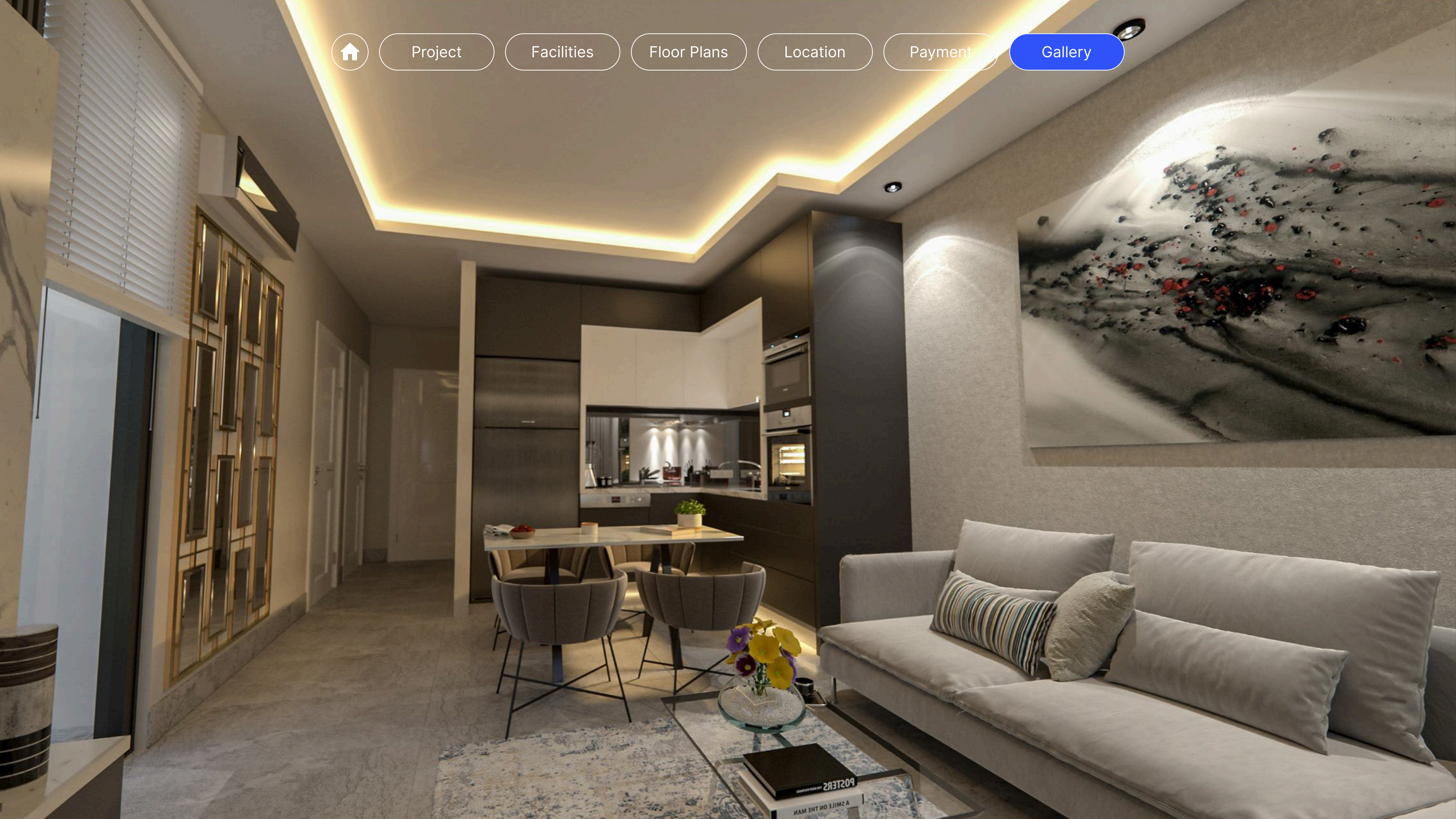
Facilities

Floor Plans

Location

Payment

Gallery





Project

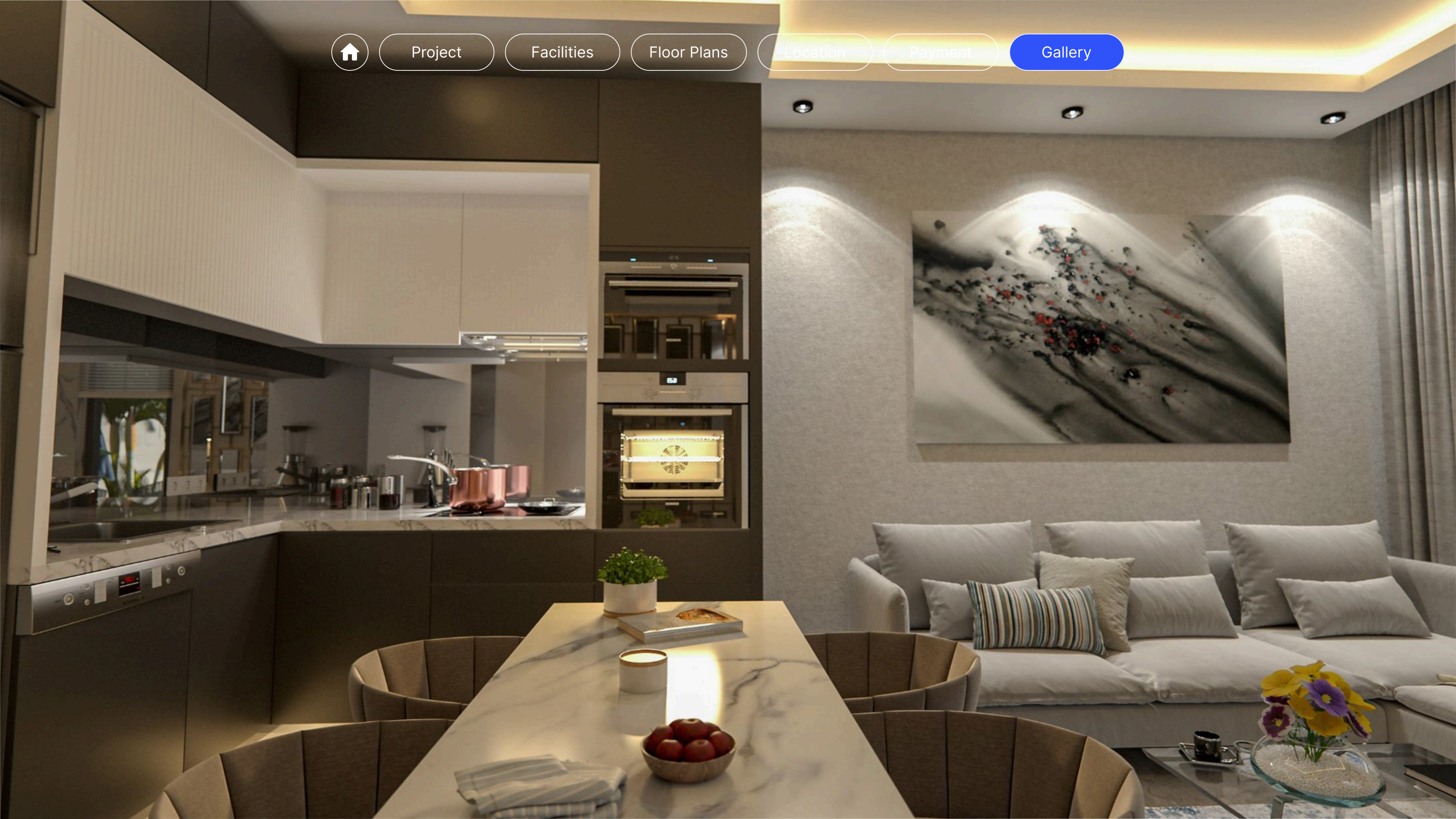
Facilities

Floor Plans

Location

Payment

Gallery





Project

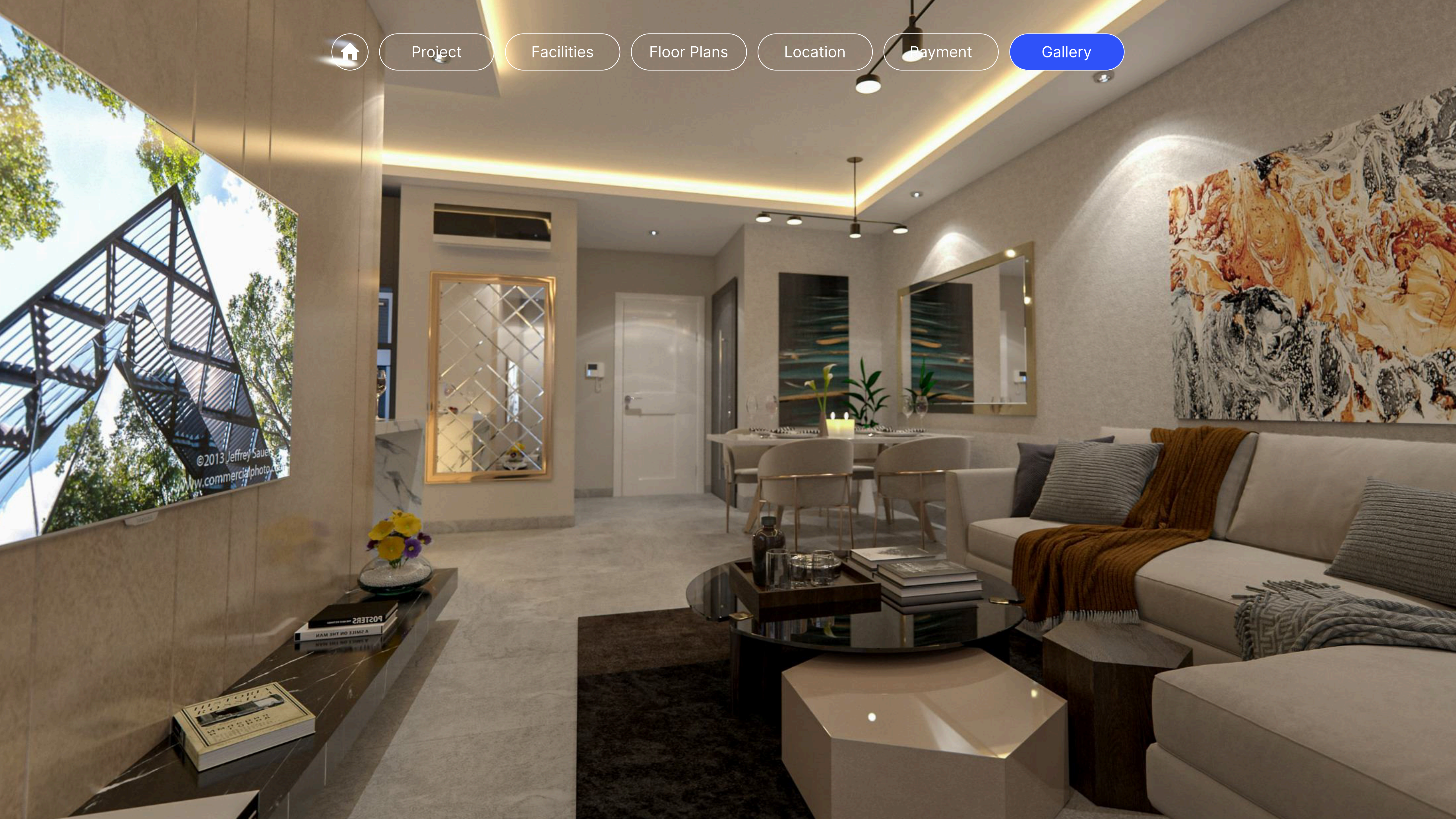
Facilities

Floor Plans

Location

Payment

Gallery





Project

Facilities

Floor Plans

Location

Payment

Gallery





Project

Facilities

Floor Plans

Location

Payment

Gallery



For more information

You can access detailed photos and
information via Google Drive or our official
website.

