

[Project](#)[Facilities](#)[Floor Plans](#)[Location](#)[Payment](#)[Gallery](#)

Hatipoğlu Prime

"Hatipoğlu Prime is a prestigious residential project rising in the heart of Alanya."

[Explore →](#)

HATİPOĞLU PRIME

[Project](#)[Facilities](#)[Floor Plans](#)[Location](#)[Payment](#)[Gallery](#)

Hatipoğlu Prime

Modern Living Spaces

Project Details

Our project consists of 20 apartments built on a 900 m² plot of land.

Apartment Options:

2+1

2+1 Duplex

Watch the Video

Enjoy your morning coffee on the balcony with the breeze of the Mediterranean...



[Project](#)[Facilities](#)[Floor Plans](#)[Location](#)[Payment](#)[Gallery](#)

Kleopatra Beach • City Center

In the City By the Coast

Hatipoğlu Prime is located in Alanya, just 200 meters (approx. 2-minute walk) from the city center 650 meters (approx. 9-minute walk) from Kleopatra Beach With its modern architecture, high rental potential, and prestigious location, it is designed both for living and for investment.

With its eye-catching facade, functional apartment layouts, and central location, it offers a privileged lifestyle right in the heart of the city.

[Explore →](#)



Project

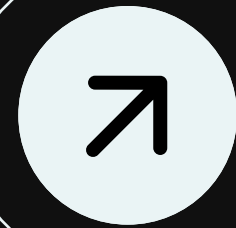
Facilities

Floor Plans

Location

Payment

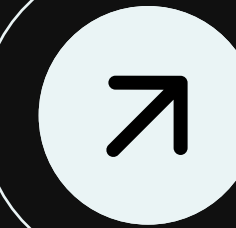
Gallery



Swimming Pool



Fitness Center



Elevator



Children's Pool



Sauna



Children's Playground



Lobby



Game Room



Satellite TV



Outdoor Parking



Generator



Project

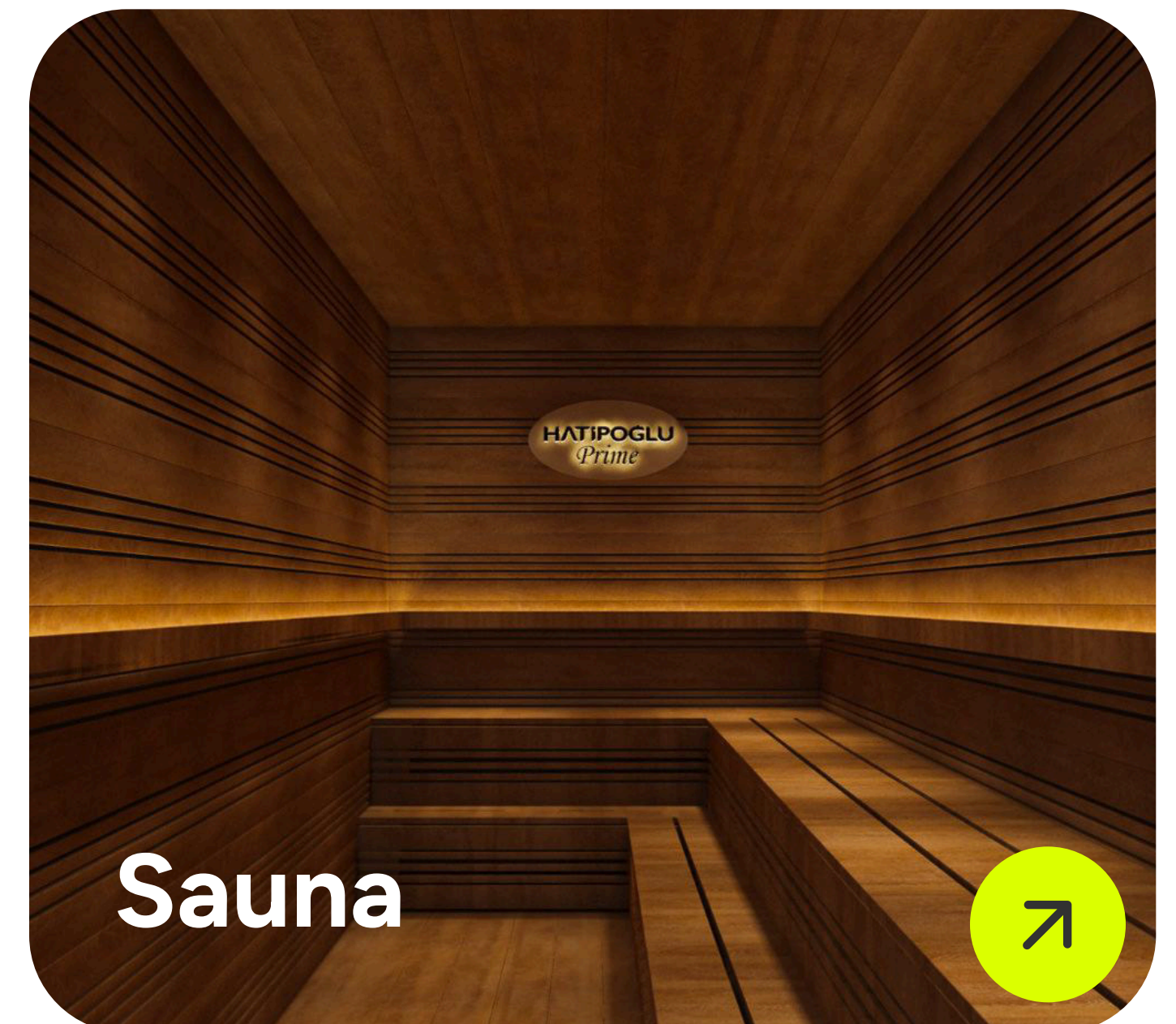
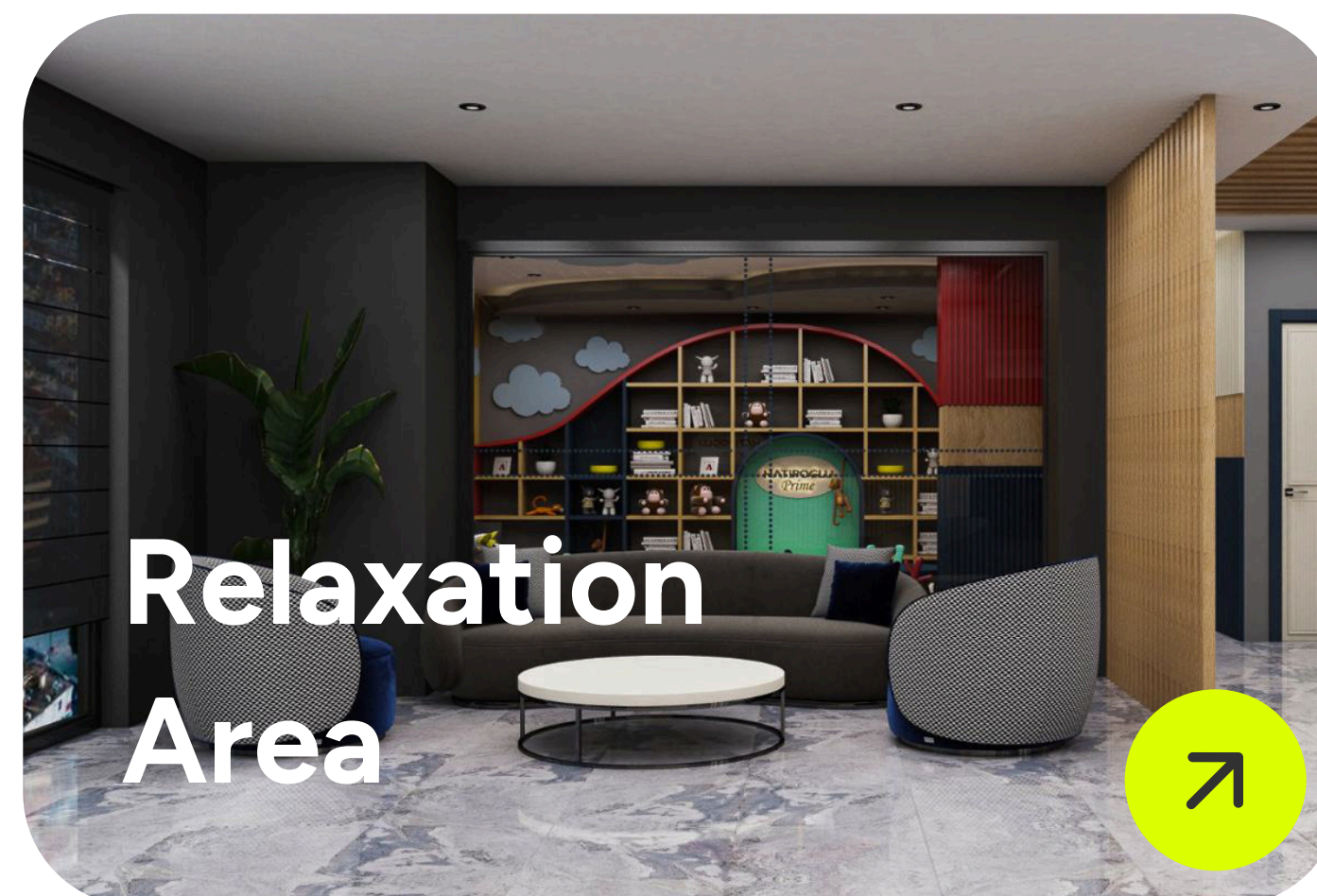
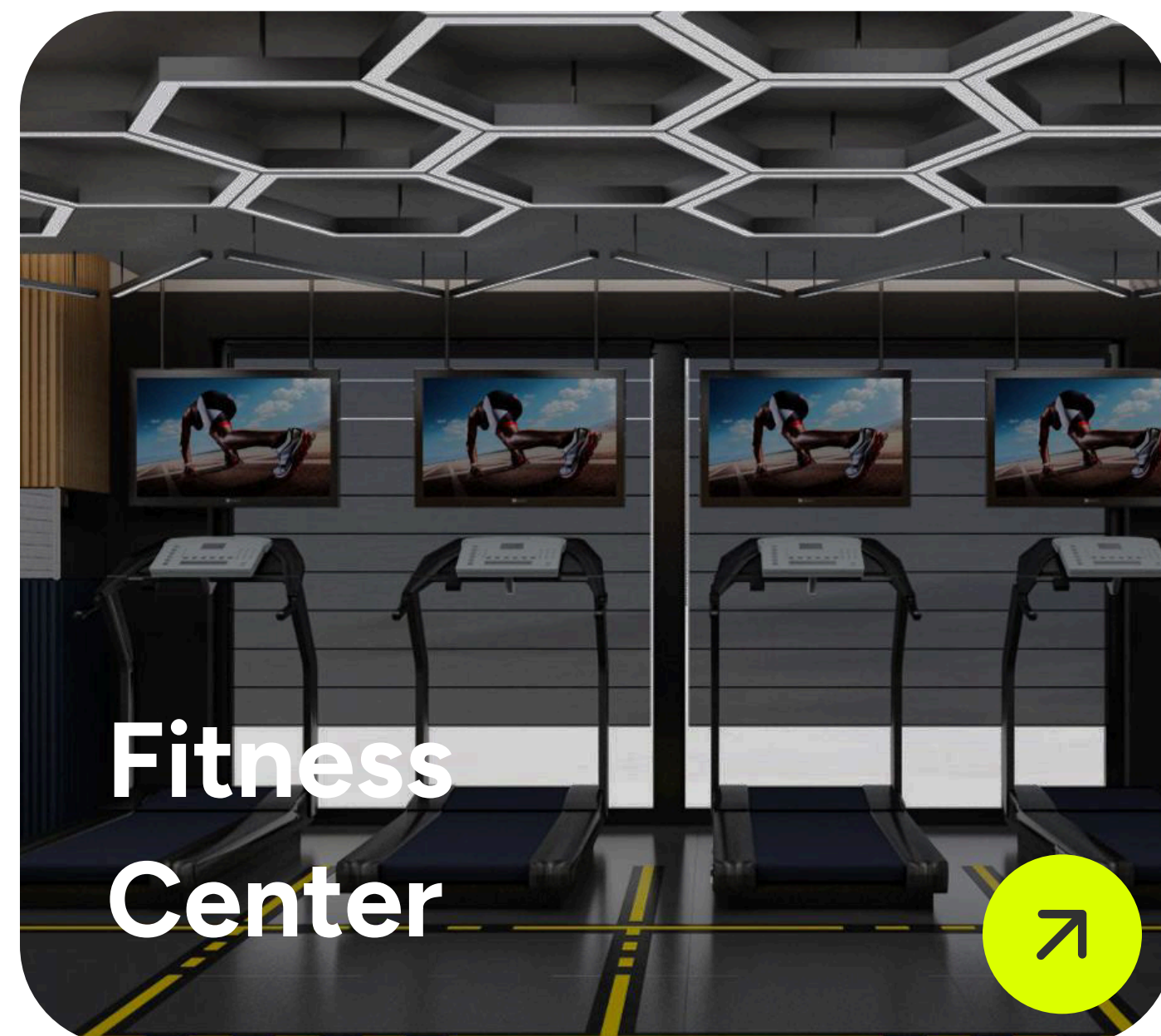
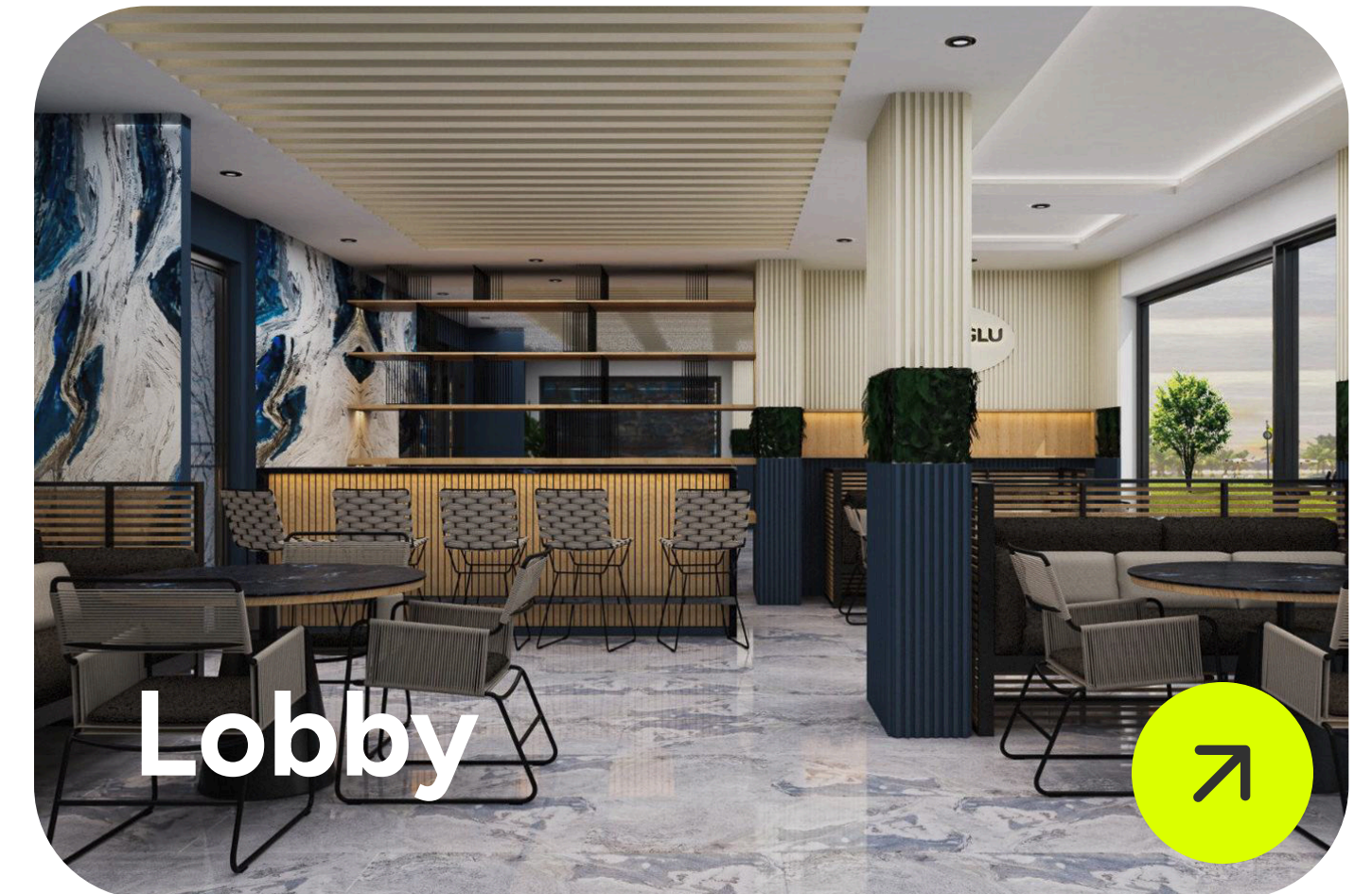
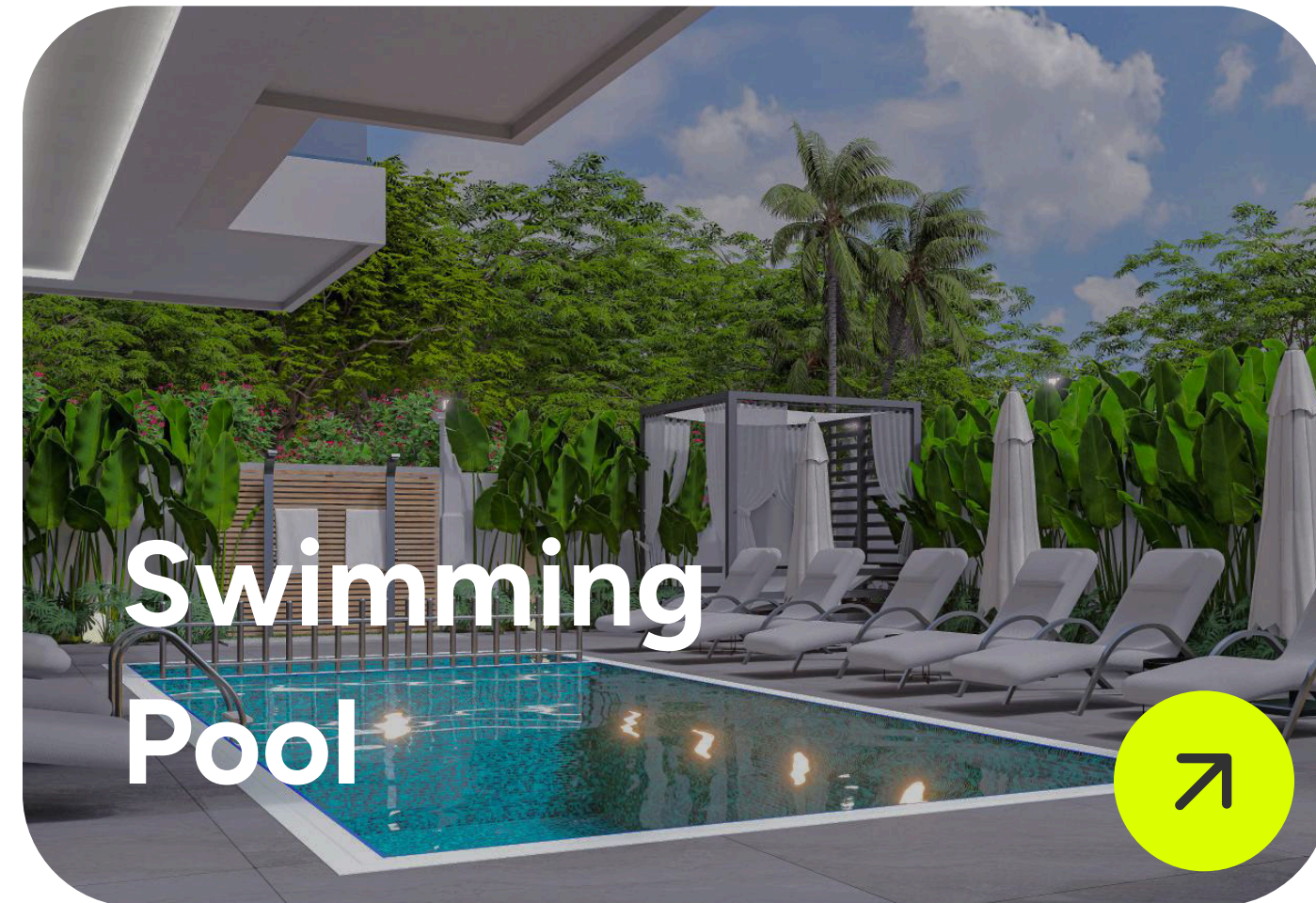
Facilities

Floor Plans

Location

Payment

Gallery





Project

Facilities

Floor Plans

Location

Payment

Gallery

Hatipoğlu Prime includes a total of 20 apartments:

15 standard apartments: 2+1 (61 m²)

5 duplex apartments: 2+1 (138 m²)

All apartments will be delivered with high-quality and stylish kitchen cabinets and bathroom furnishings.



Southeast-Facing Apartments

17

Lower Floor

17

Upper Floor

12

7

2

South-Facing Apartments

18

Lower Floor

18

Upper Floor

13

8

3

Social Area

Total: 191.5 m²





Project

Facilities

Floor Plans

Location

Payment

Gallery

5

10

15

Apartment Details

Interior: 55 m²

Balcony: 6 m²

Total: 61 m²





Project

Facilities

Floor Plans

Location

Payment

Gallery

4

9

14

Apartment Details

Interior: 55 m²

Balcony: 6 m²

Total: 61 m²



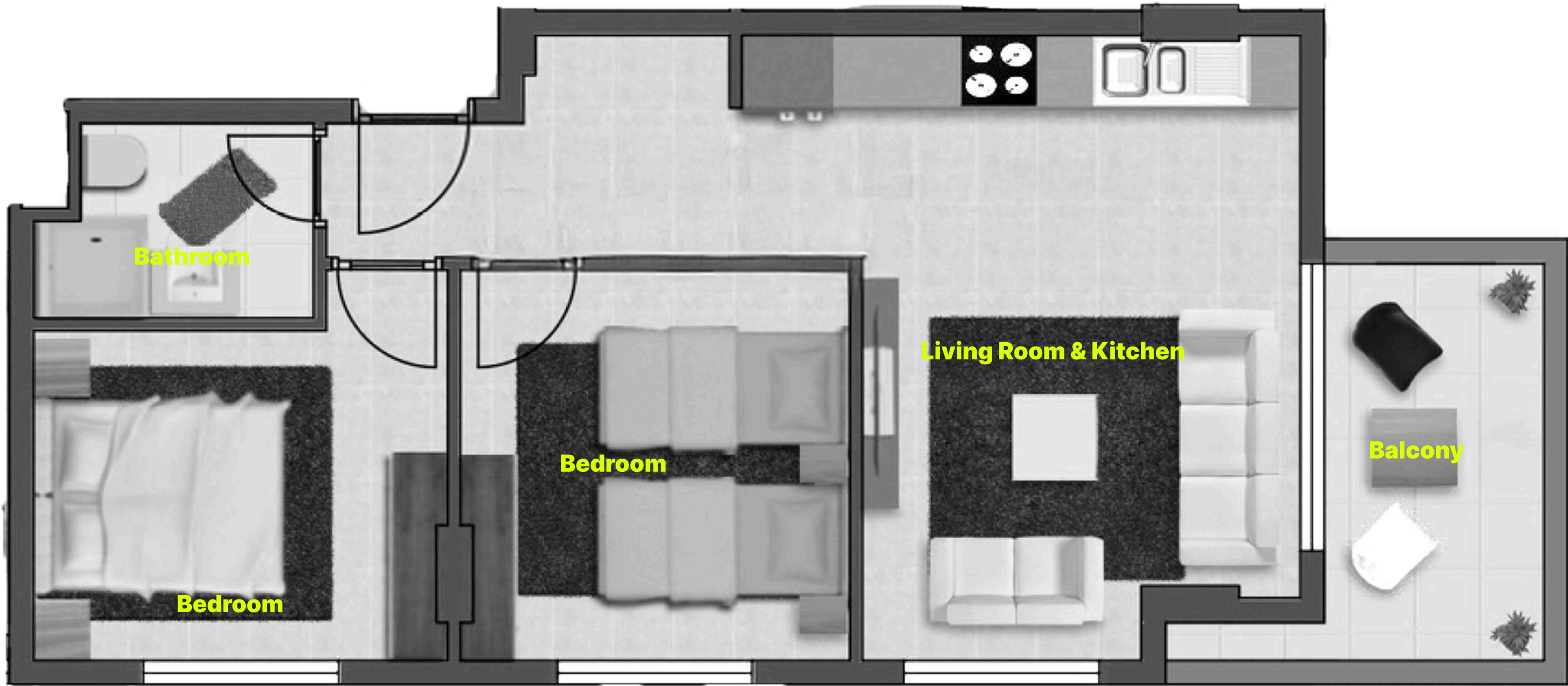
2

7

12

Apartment Details

Interior: 55 m²
Balcony: 6 m²
Total: 61 m²





Project

Facilities

Floor Plans

Location

Payment

Gallery

1

6

11

Apartment Details

Interior: 55 m²

Balcony: 6 m²

Total: 61 m²





Project

Facilities

Floor Plans

Location

Payment

Gallery

3

8

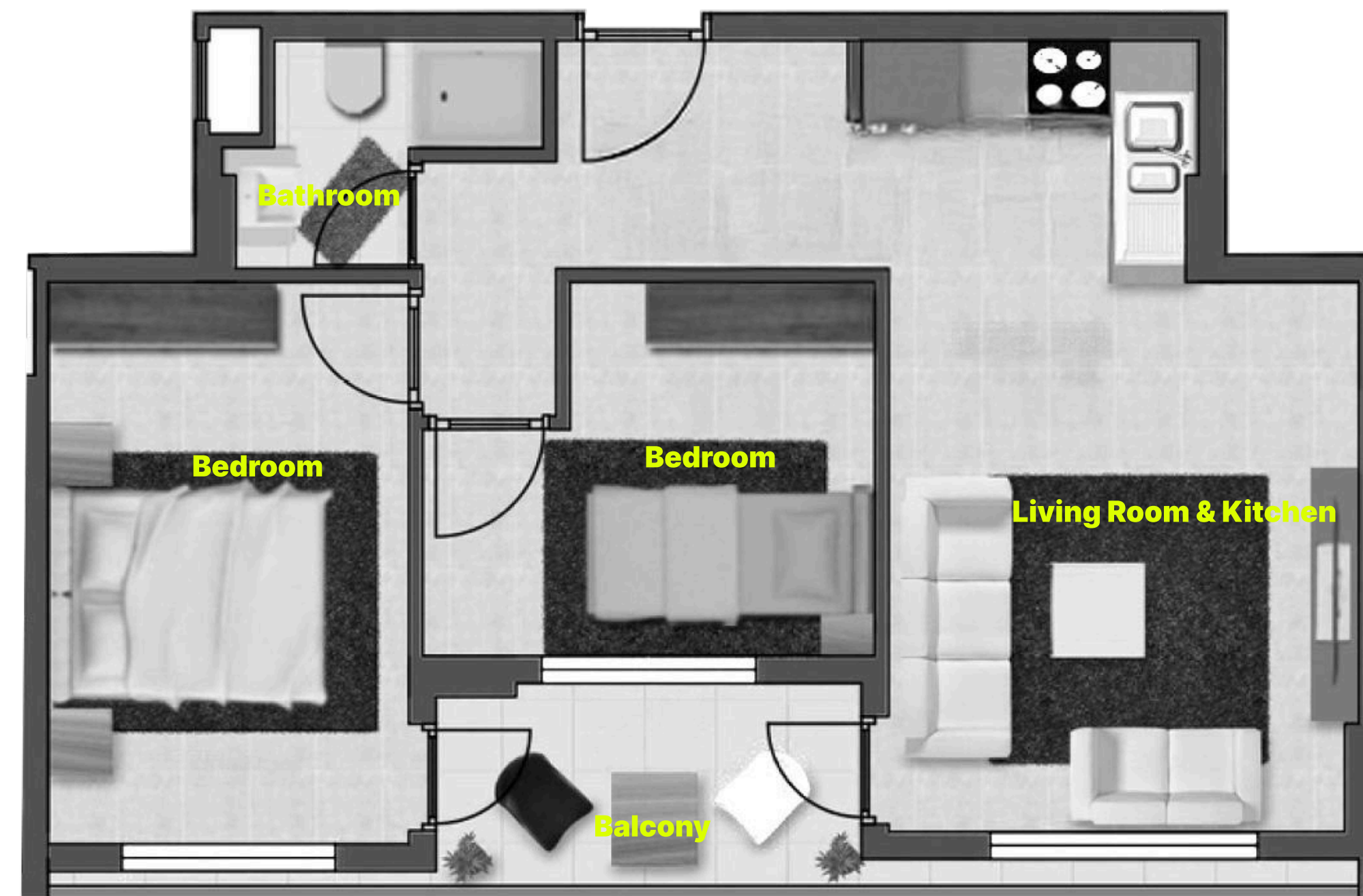
13

Apartment Details

Interior: 55 m²

Balcony: 6 m²

Total: **61 m²**



[Project](#)[Facilities](#)[Floor Plans](#)[Location](#)[Payment](#)[Gallery](#)

16

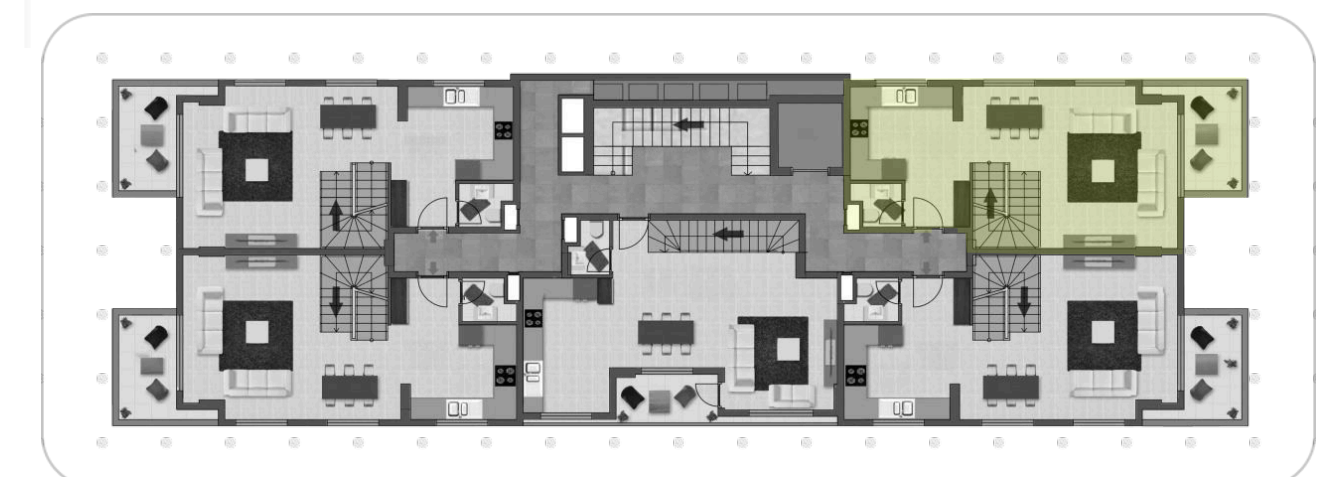
Apartment Details

Lower Floor: 55 m²

Balcony: 6 m²

Subtotal: 61 m²

Total Area: 138 m²



[Project](#)[Facilities](#)[Floor Plans](#)[Location](#)[Payment](#)[Gallery](#)

16

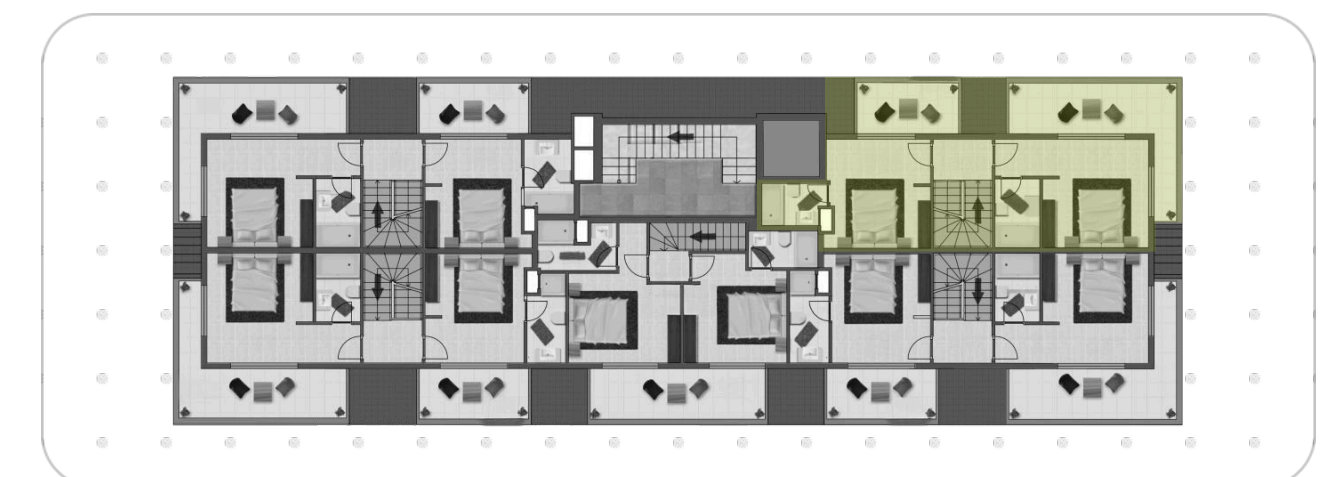
Apartment Details

Upper Floor: 54 m²

Balcony: 23 m²

Subtotal: 77 m²

Total Area: 138 m²



[Project](#)[Facilities](#)[Floor Plans](#)[Location](#)[Payment](#)[Gallery](#)

17

Apartment Details

Lower Floor: 55 m²

Balcony: 6 m²

Subtotal: 61 m²

Total Area: 138 m²



[Project](#)[Facilities](#)[Floor Plans](#)[Location](#)[Payment](#)[Gallery](#)

17

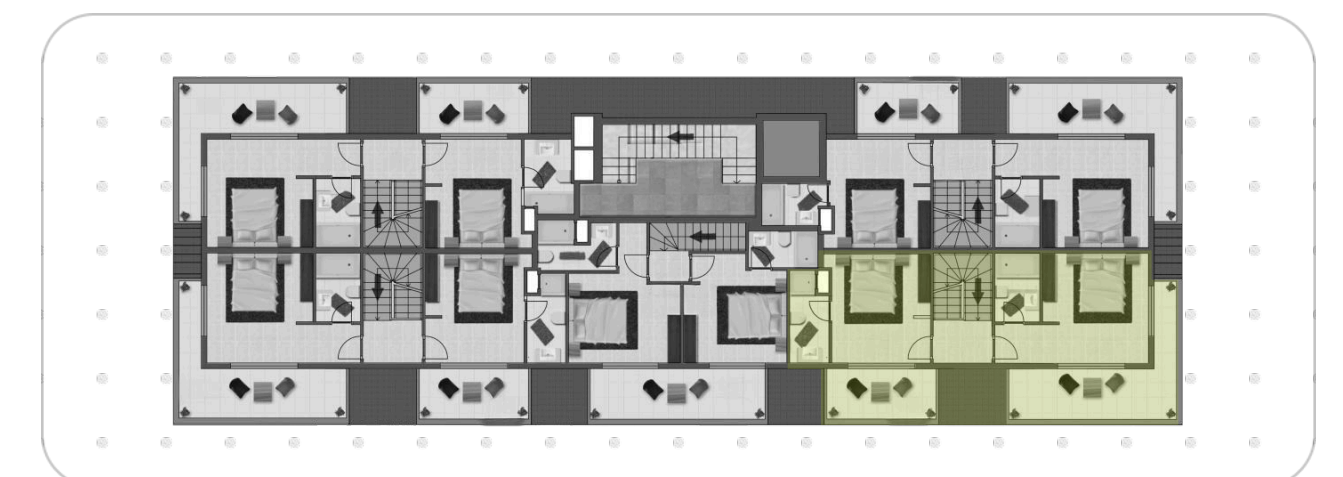
Apartment Details

Upper Floor: 54 m²

Balcony: 23 m²

Subtotal: 77 m²

Total Area: 138 m²



[Project](#)[Facilities](#)[Floor Plans](#)[Location](#)[Payment](#)[Gallery](#)

18

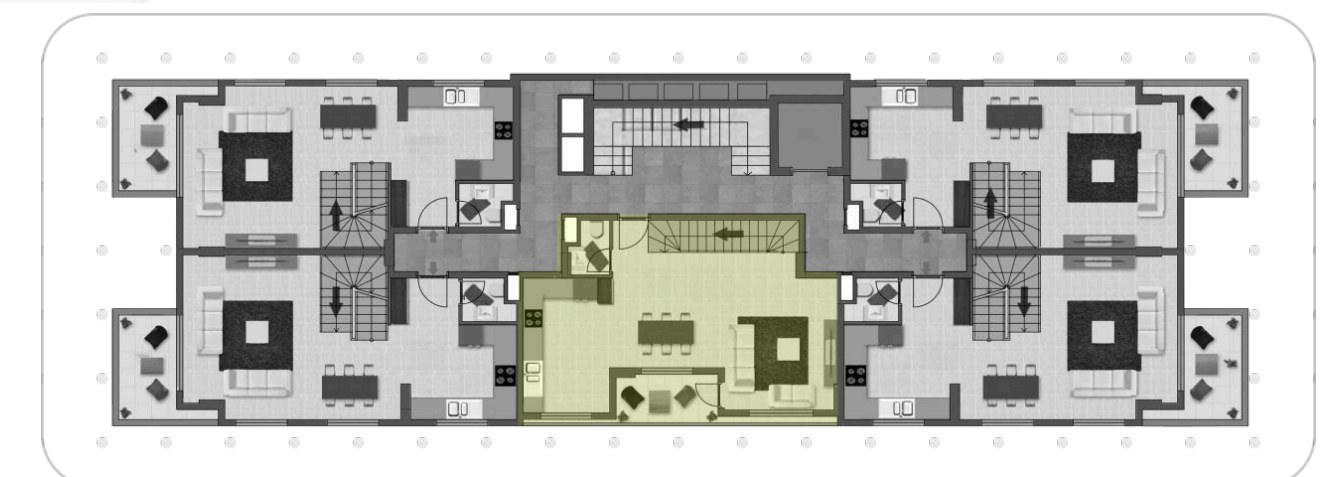
Apartment Details

Lower Floor: 55 m²

Balcony: 6 m²

Subtotal: 61 m²

Total Area: 138 m²



[Project](#)[Facilities](#)[Floor Plans](#)[Location](#)[Payment](#)[Gallery](#)

18

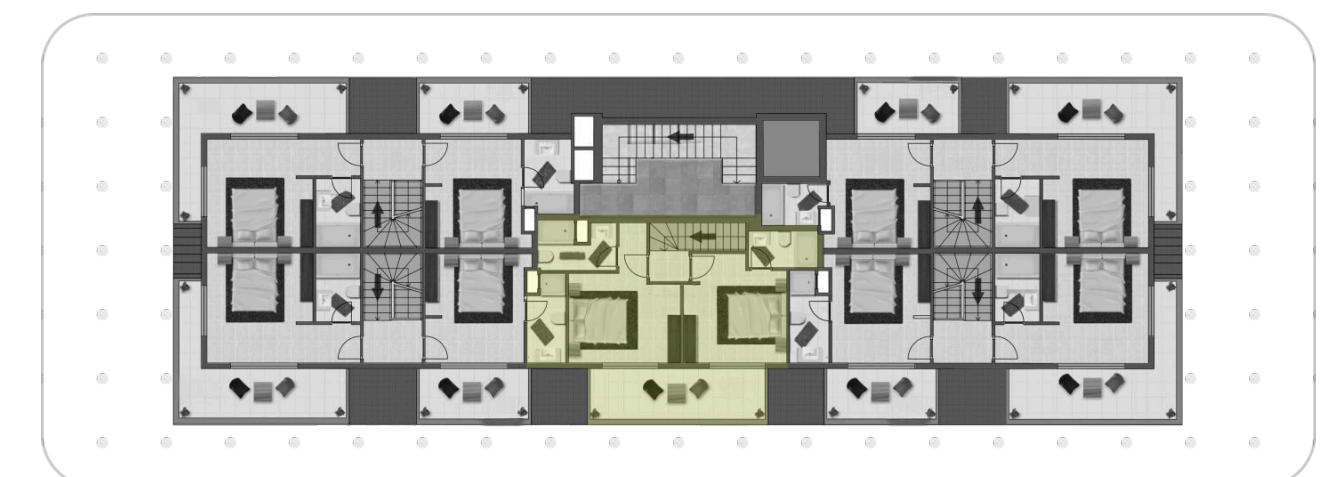
Apartment Details

Upper Floor: 47 m²

Balcony: 12.5 m²

Subtotal: 59.5 m²

Total Area: 138 m²



[Project](#)[Facilities](#)[Floor Plans](#)[Location](#)[Payment](#)[Gallery](#)

19

Apartment Details

Lower Floor: 55 m²

Balcony: 6 m²

Subtotal: 61 m²

Total Area: **138 m²**



[Project](#)[Facilities](#)[Floor Plans](#)[Location](#)[Payment](#)[Gallery](#)

19

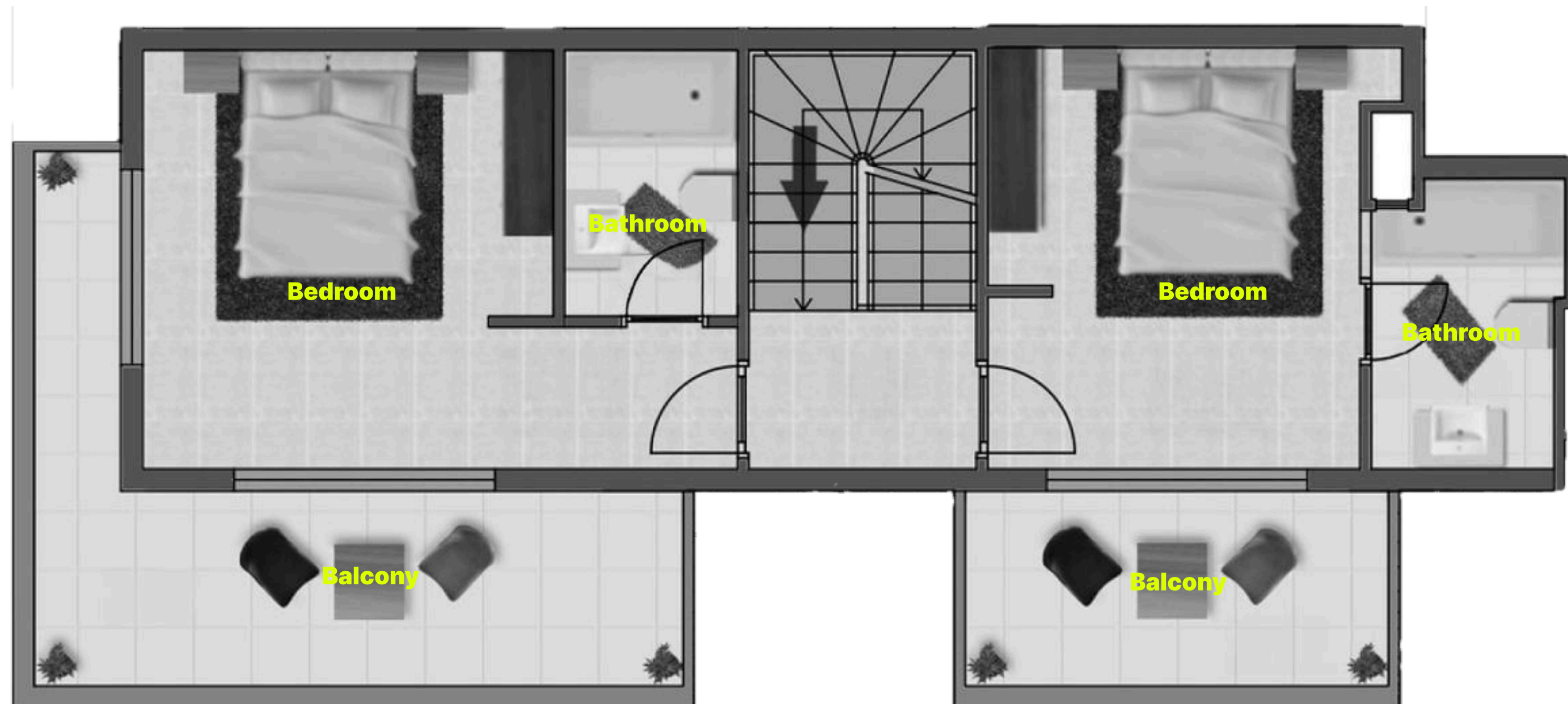
Apartment Details

Upper Floor: 54 m²

Balcony: 23 m²

Subtotal: 77 m²

Total Area: 138 m²



[Project](#)[Facilities](#)[Floor Plans](#)[Location](#)[Payment](#)[Gallery](#)

20

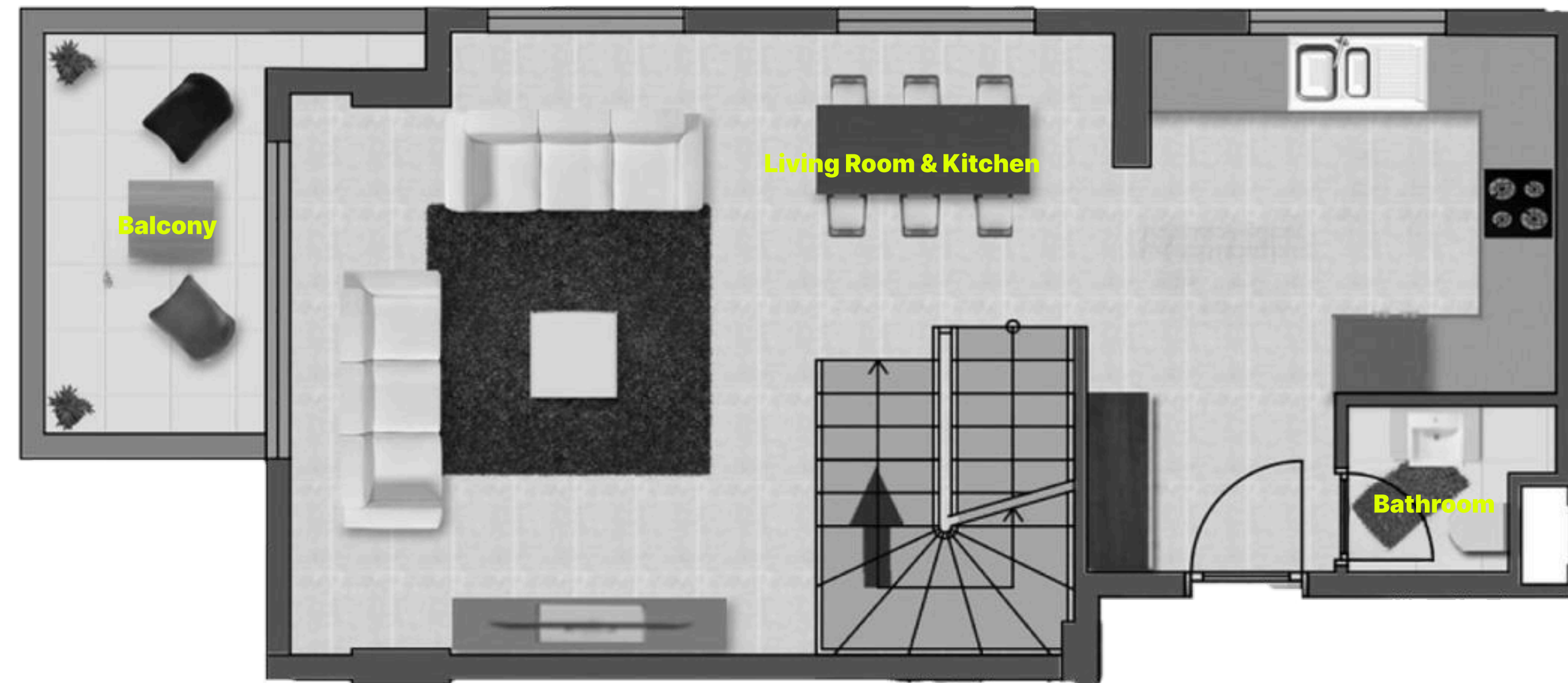
Apartment Details

Lower Floor: 55 m²

Balcony: 6 m²

Subtotal: 61 m²

Total Area: 138 m²



[Project](#)[Facilities](#)[Floor Plans](#)[Location](#)[Payment](#)[Gallery](#)

20

Apartment Details

Upper Floor: 54 m²

Balcony: 23 m²

Subtotal: 77 m²

Total Area: 138 m²





Project

Facilities

Floor Plans

Location

Payment

Gallery



650 m

Kleopatra Beach

200 m

City Center

300 m

Fish&Fruit Market

[Project](#)[Facilities](#)[Floor Plans](#)[Location](#)[Payment](#)[Gallery](#)

Hatipoğlu Prime

welcomes you with investor-friendly
and flexible financing terms.



Project

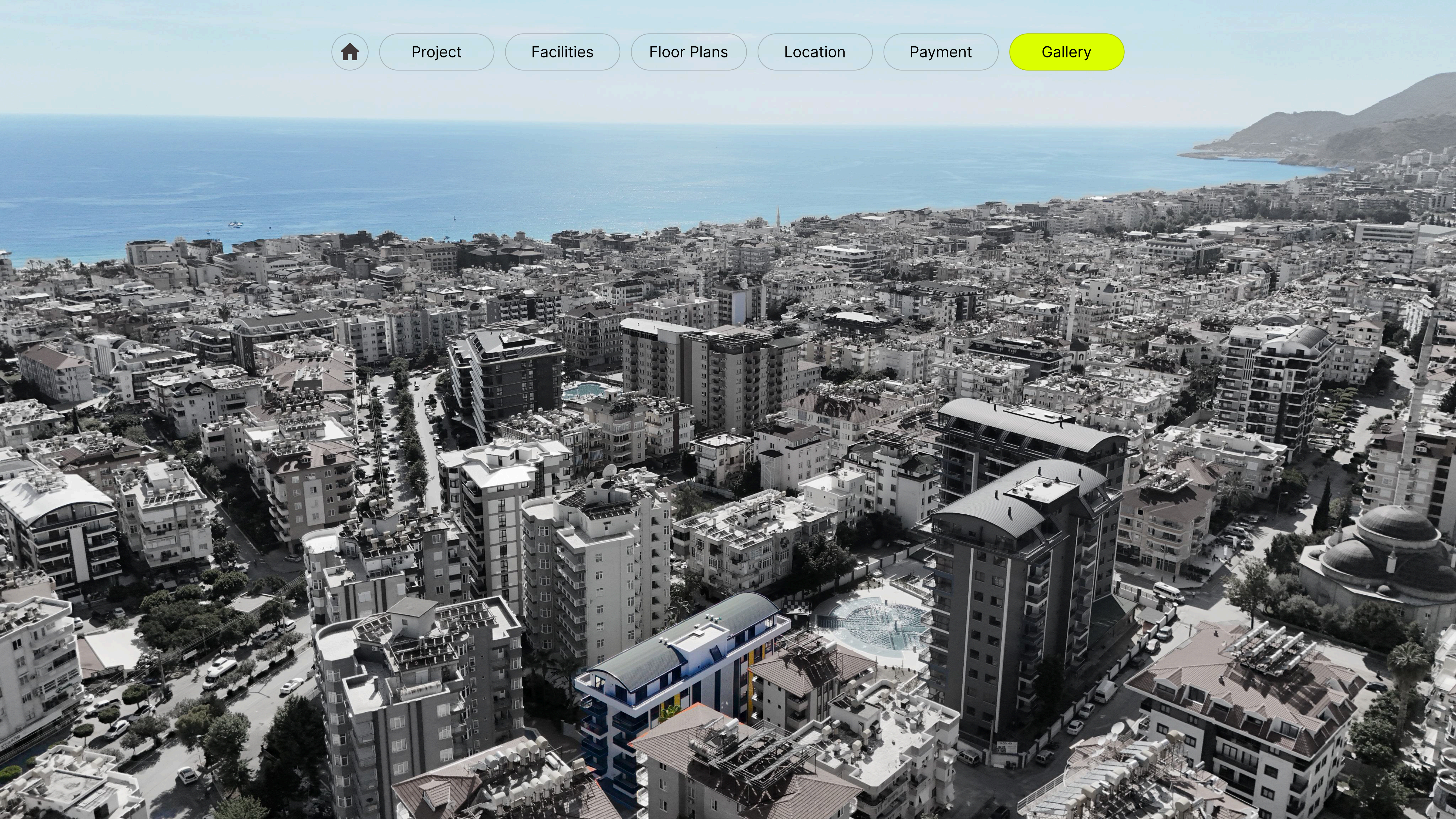
Facilities

Floor Plans

Location

Payment

Gallery





Project

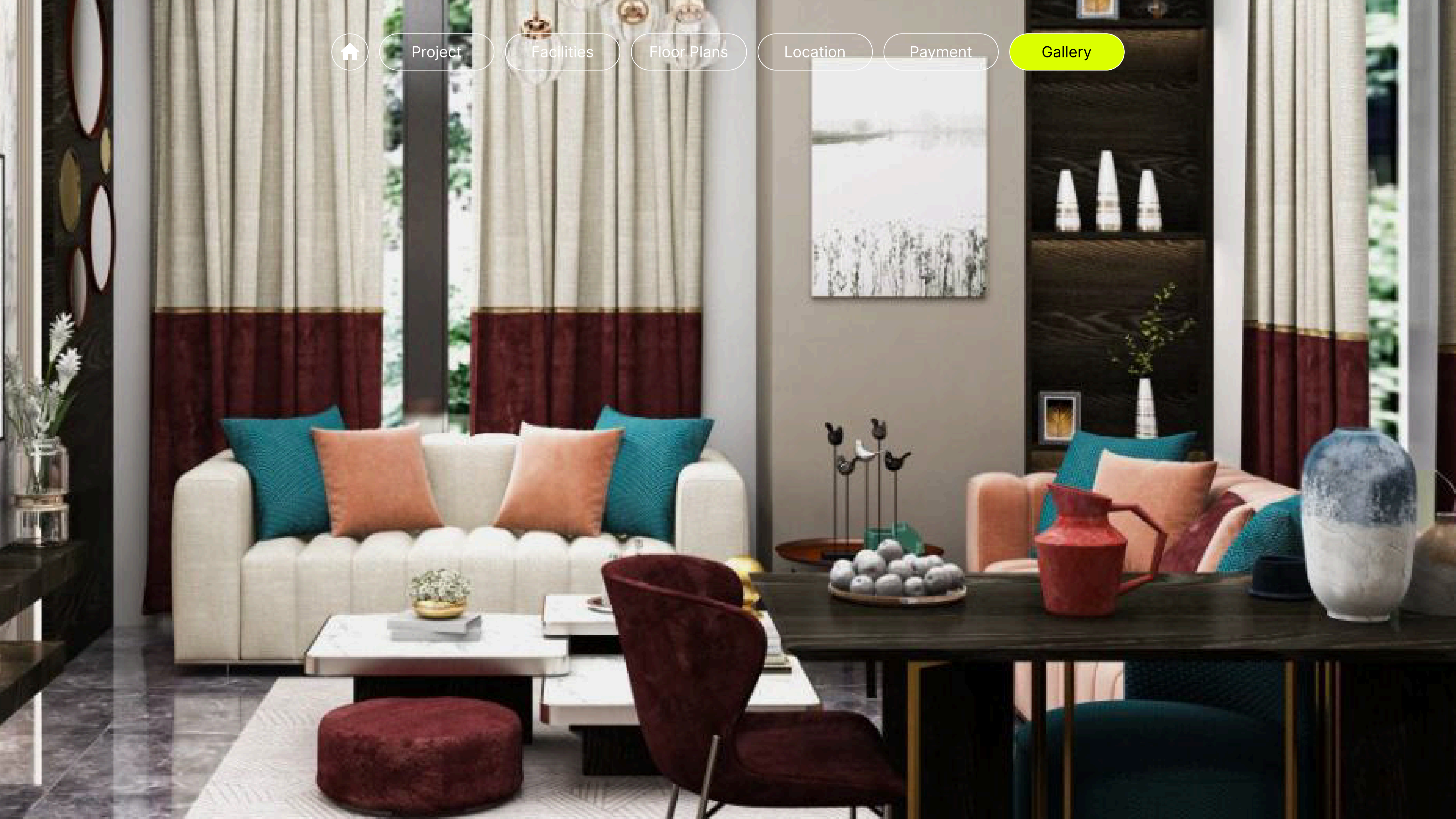
Facilities

Floor Plans

Location

Payment

Gallery





Project

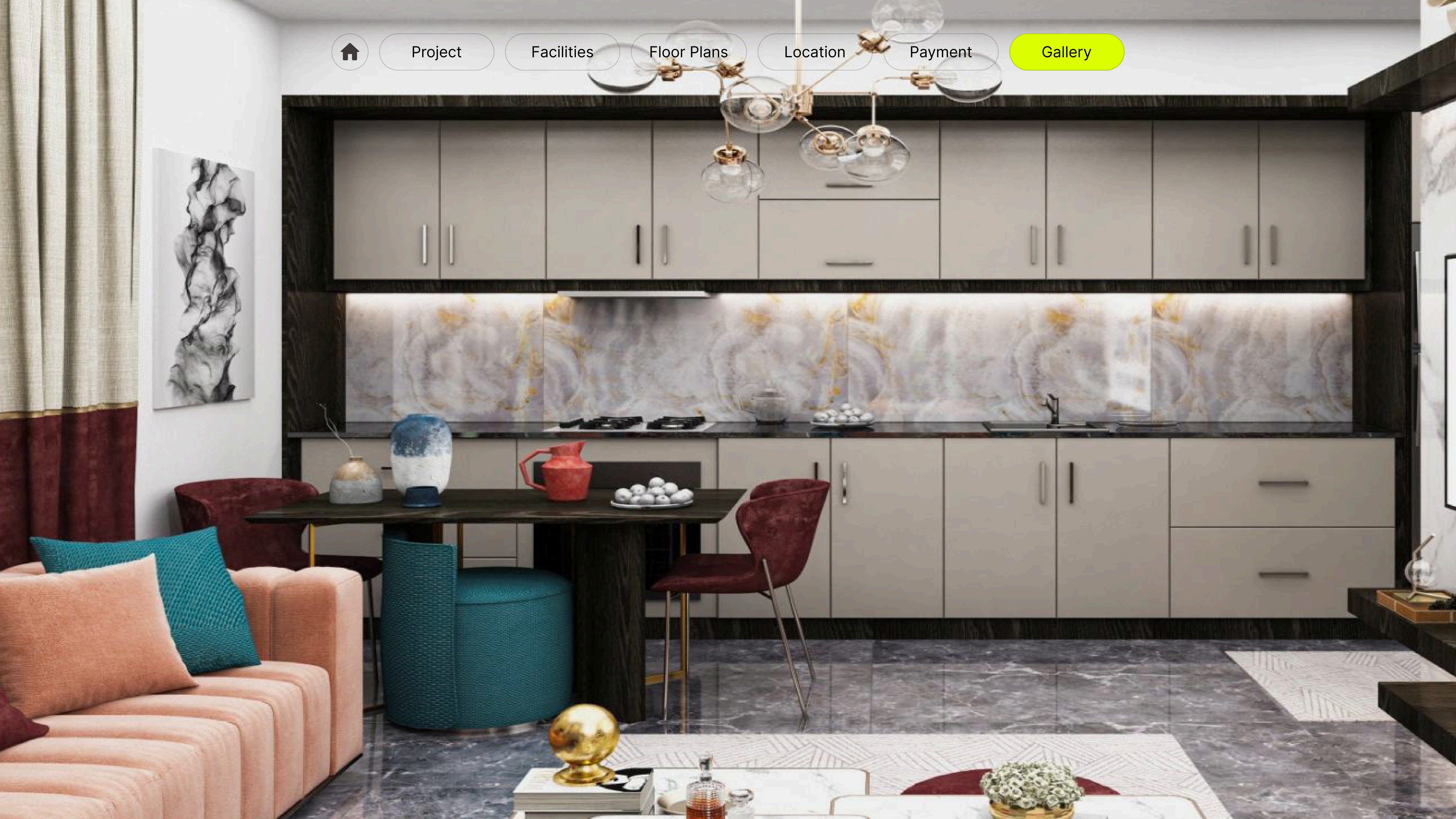
Facilities

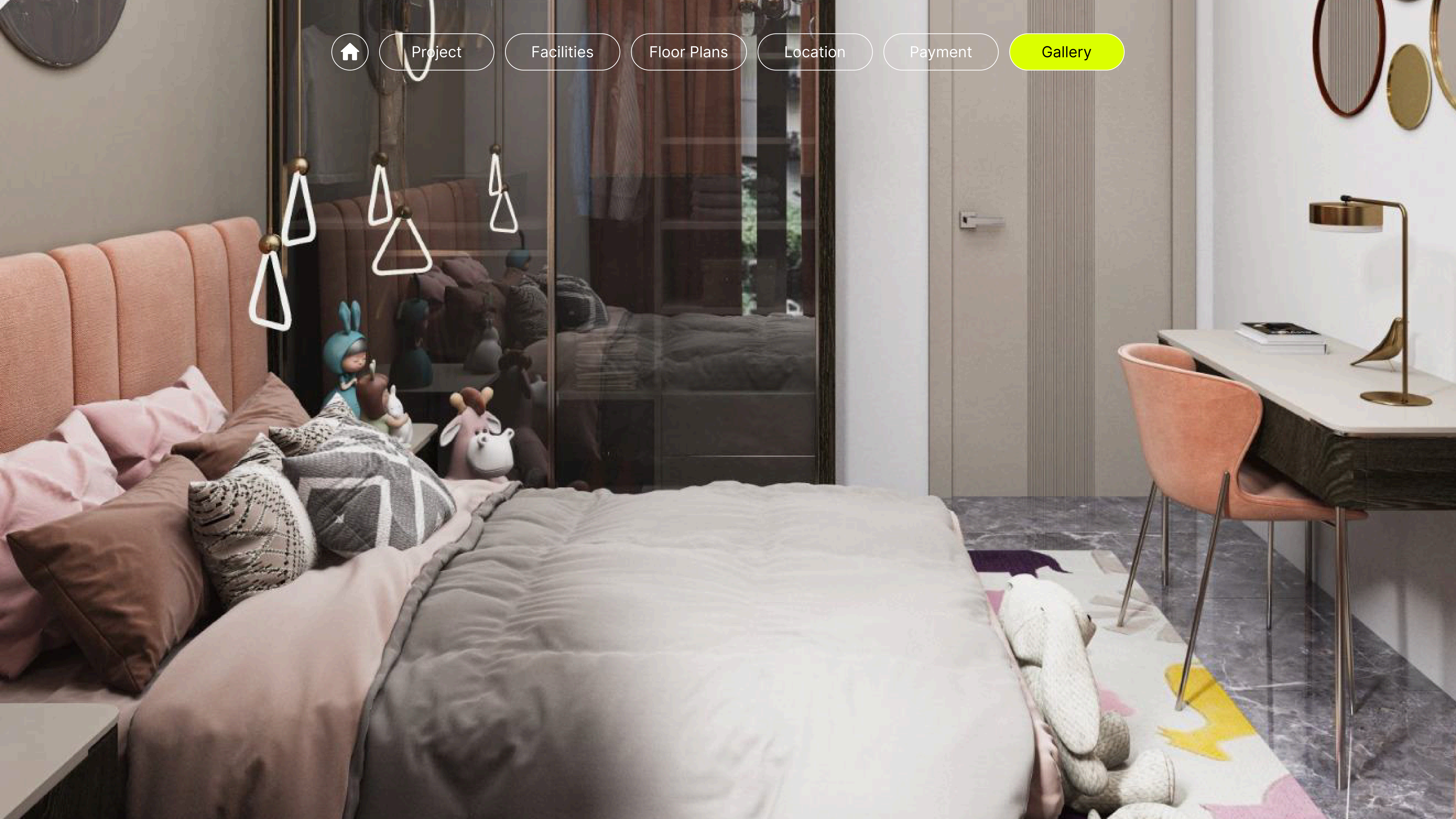
Floor Plans

Location

Payment

Gallery





Project

Facilities

Floor Plans

Location

Payment

Gallery



Project

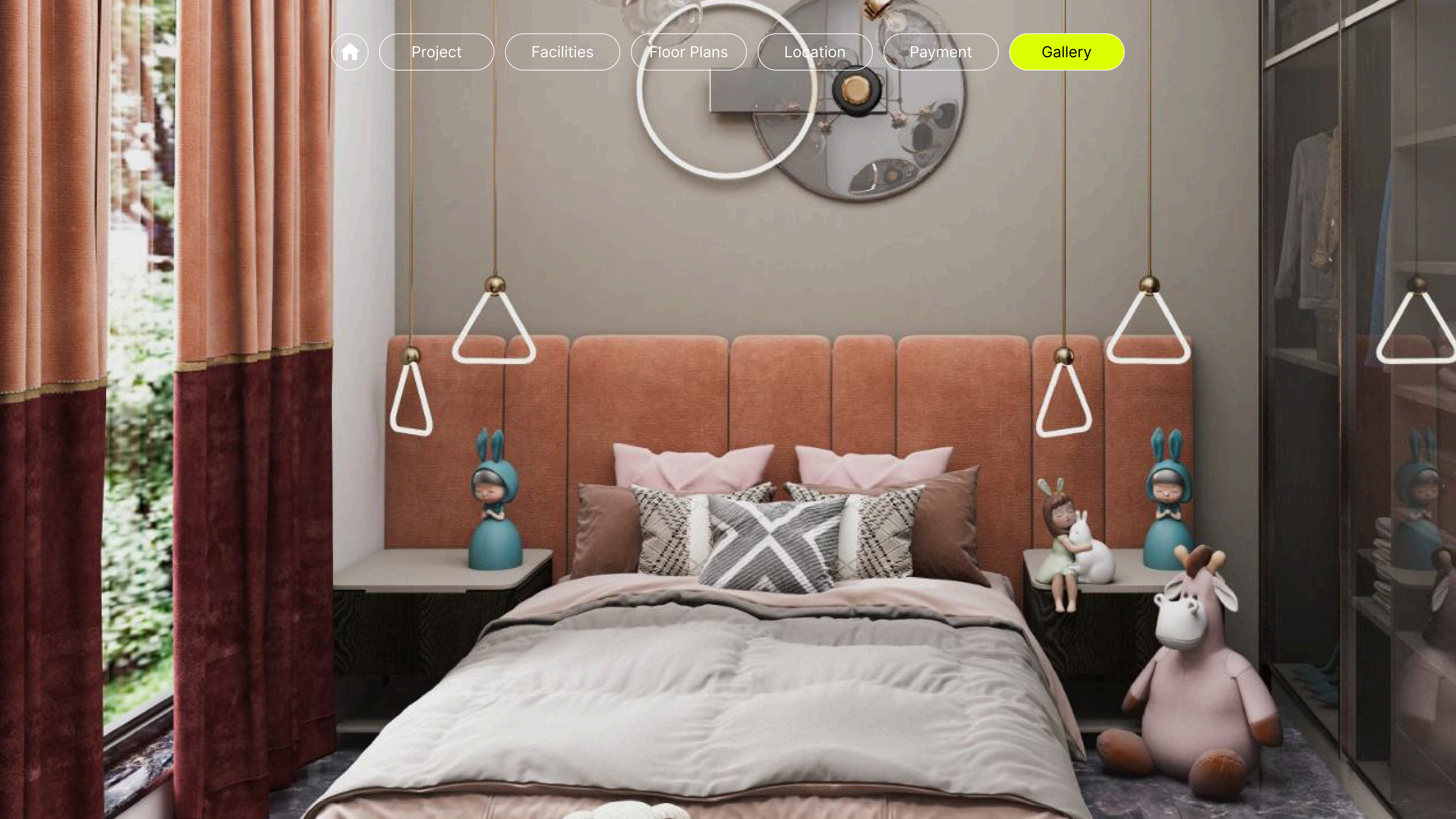
Facilities

Floor Plans

Location

Payment

Gallery





Project

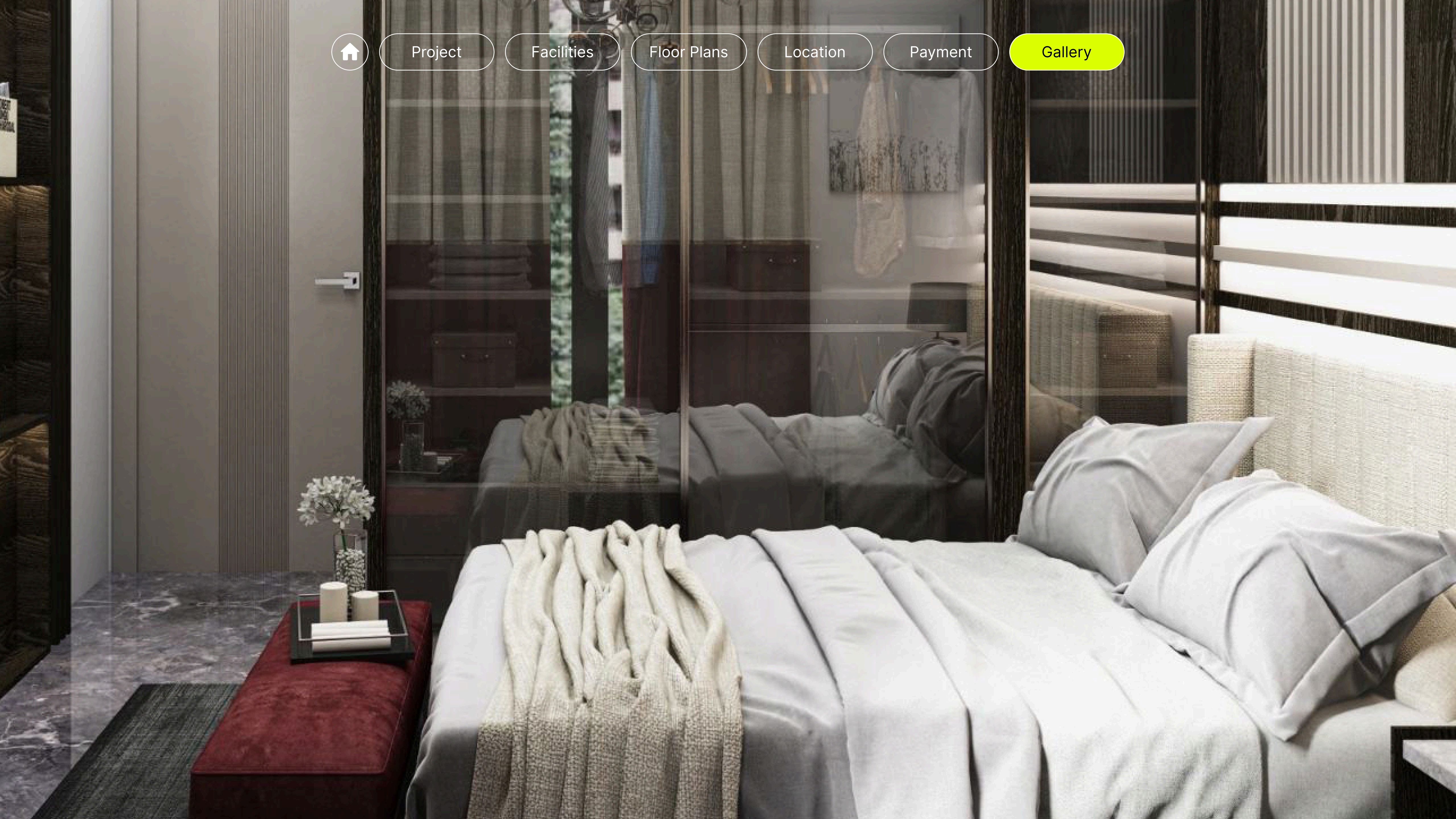
Facilities

Floor Plans

Location

Payment

Gallery





Project

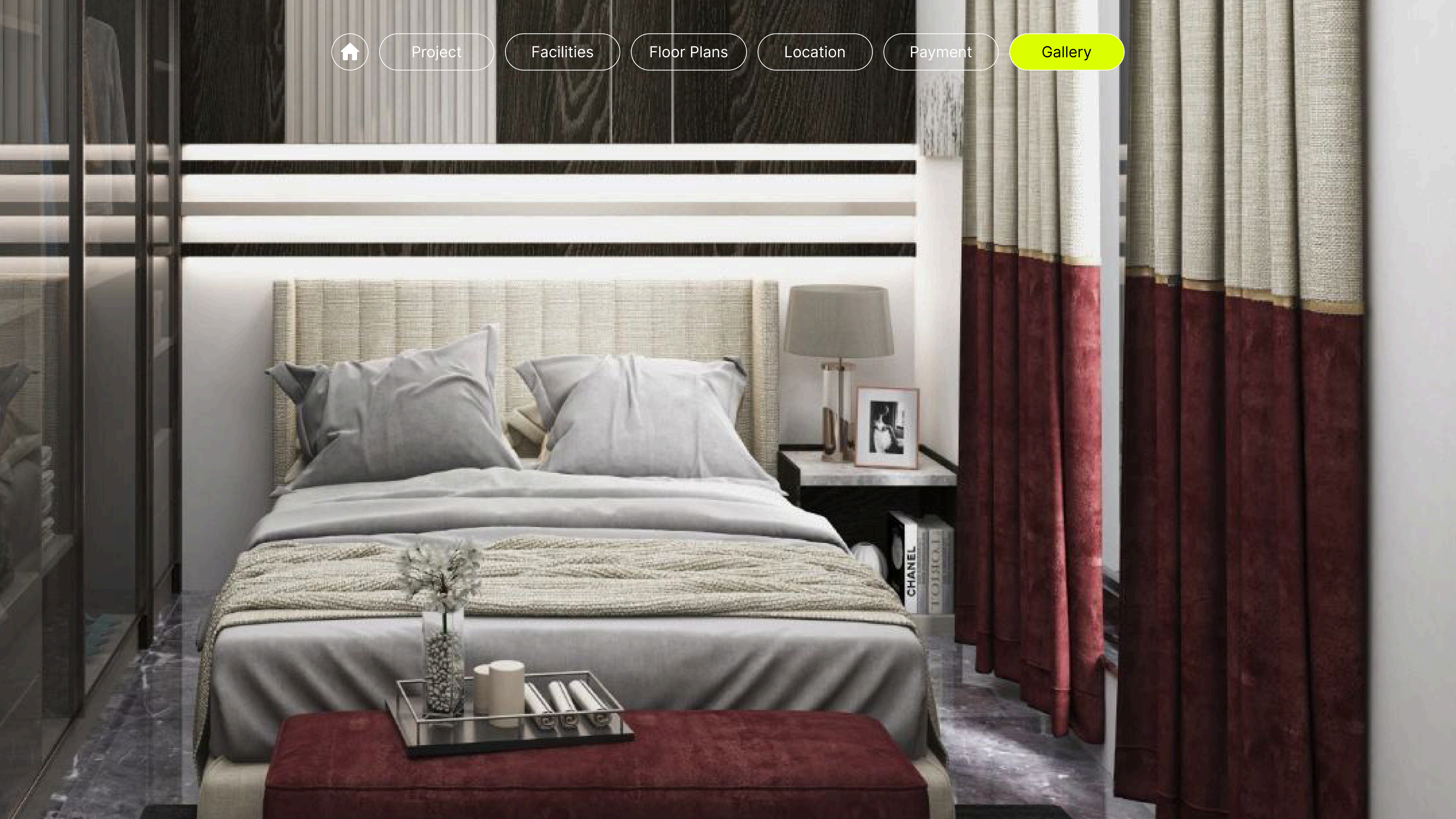
Facilities

Floor Plans

Location

Payment

Gallery



For more information

You can access detailed photos and
information via Google Drive or our official
website.

